

**FOR  
SALE**

## WINTER GARDEN PRODUCING ORANGE GROVE

3496 Avalon Rd, Winter Garden, FL 34787



### ABOUT THE PROPERTY

**SIZE** 9.41 ± acres

**PRICE** \$1,500,000

**ZONING** A-1

**FLU** RS 1/5

**ROAD  
FRONTAGE** 650' ± on Avalon Rd

**PARCEL ID** 27-23-06-4284-03-600

### DESCRIPTION

**Acreage in Winter Garden!** Currently a producing orange grove, this property would make an excellent homesite or investment project. All upland acreage.

***Call for a showing today!***

**MAURY L. CARTER & ASSOCIATES, INC.**

Licensed Real Estate Brokers | [www.maurycarter.com](http://www.maurycarter.com) | 407-422-3144

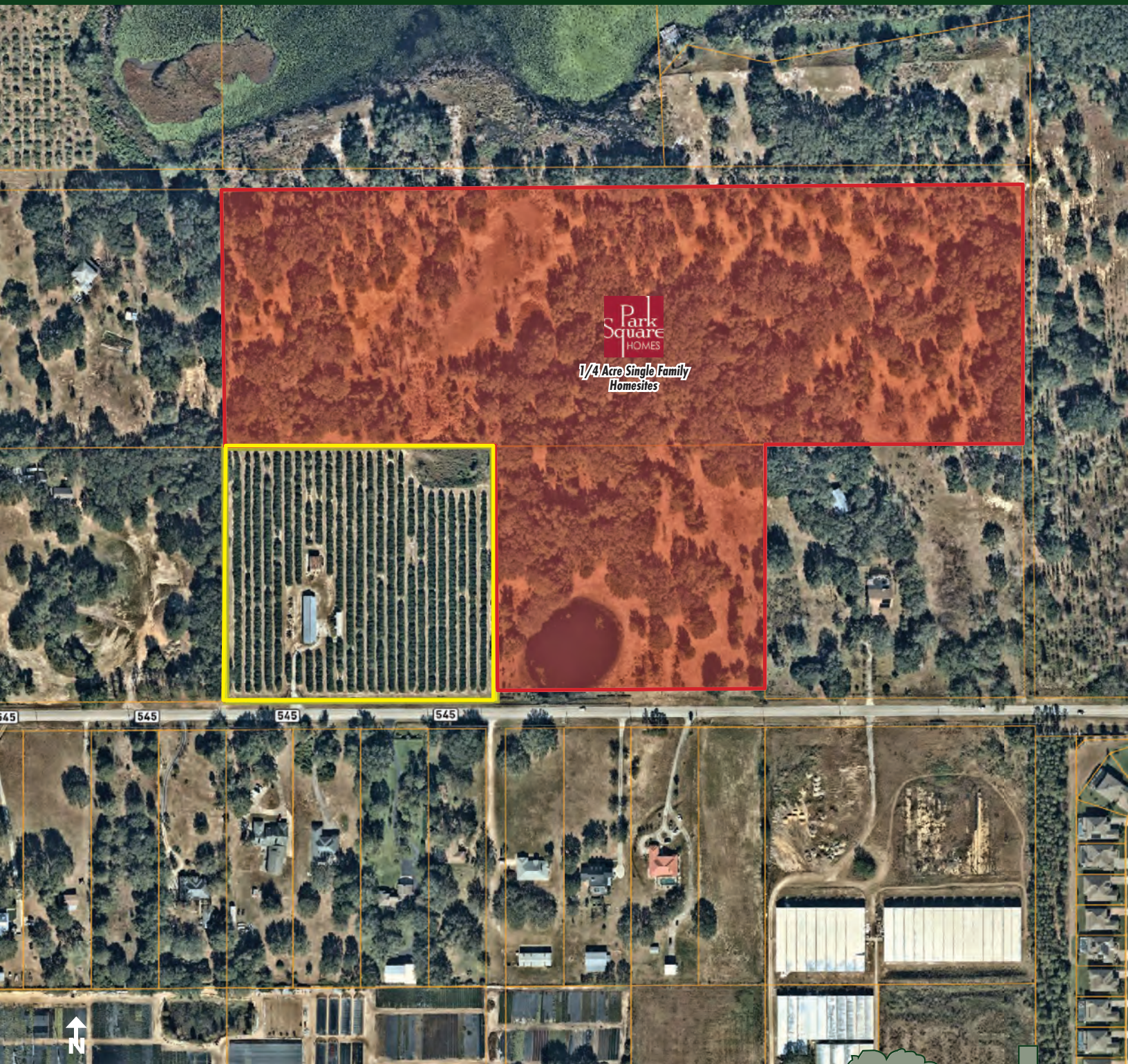




**FOR  
SALE**

## WINTER GARDEN PRODUCING ORANGE GROVE

3496 Avalon Rd, Winter Garden, FL 34787



**PARCEL MAP**

**MAURY L. CARTER & ASSOCIATES, INC.**

Licensed Real Estate Brokers | [www.maurycarter.com](http://www.maurycarter.com) | 407-422-3144

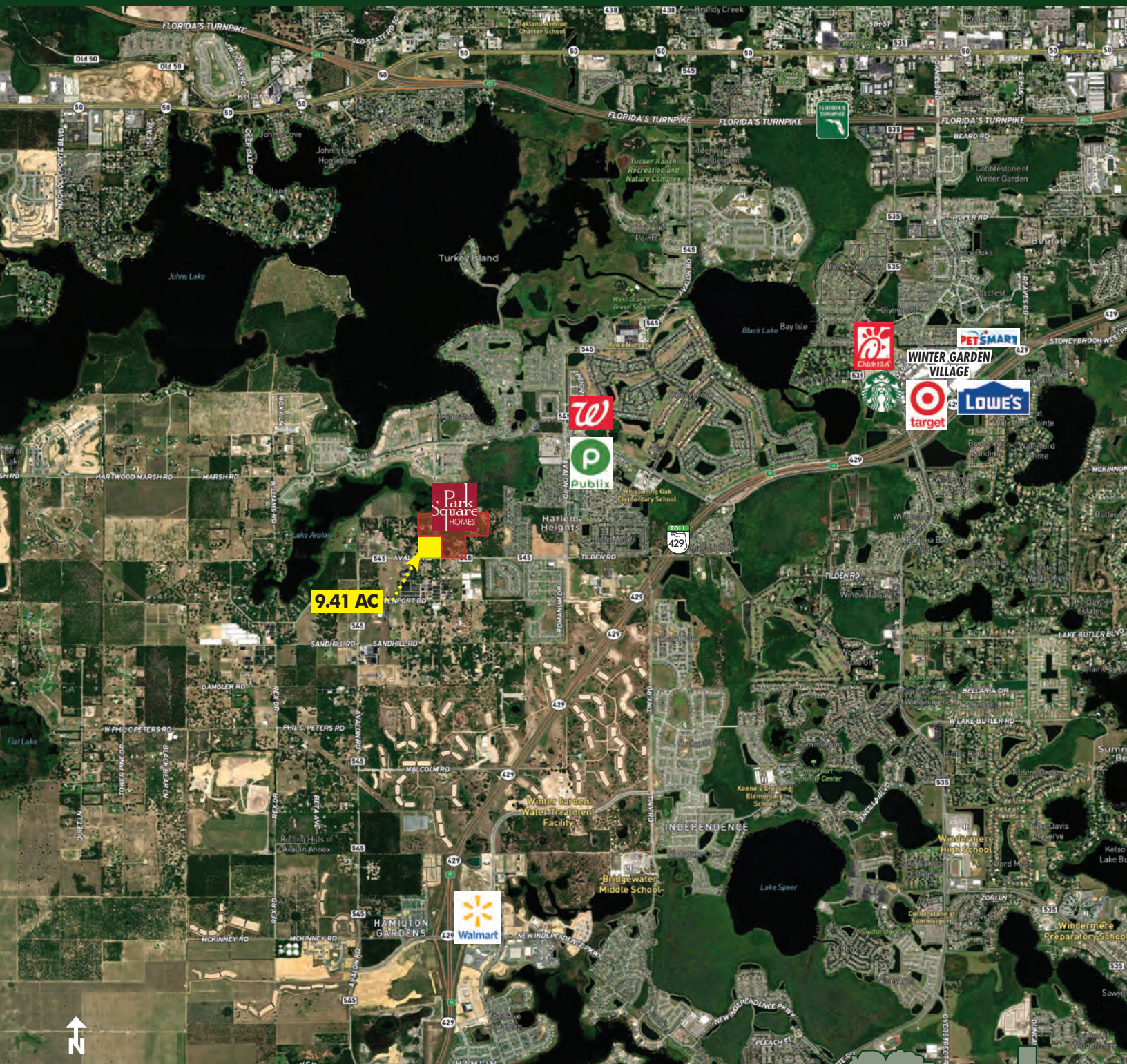




**FOR  
SALE**

# WINTER GARDEN PRODUCING ORANGE GROVE

3496 Avalon Rd, Winter Garden, FL 34787



**REGIONAL MAP**

**MAURY L. CARTER & ASSOCIATES, INC.**

Licensed Real Estate Brokers | [www.maurycarter.com](http://www.maurycarter.com) | 407-422-3144





**FOR  
SALE**

# WINTER GARDEN PRODUCING ORANGE GROVE

3496 Avalon Rd, Winter Garden, FL 34787

## DRIVE TIMES

**Theme Parks: 15 min**

**Downtown Orlando: 25 min**

**Orlando Int'l Airport: 30 min**

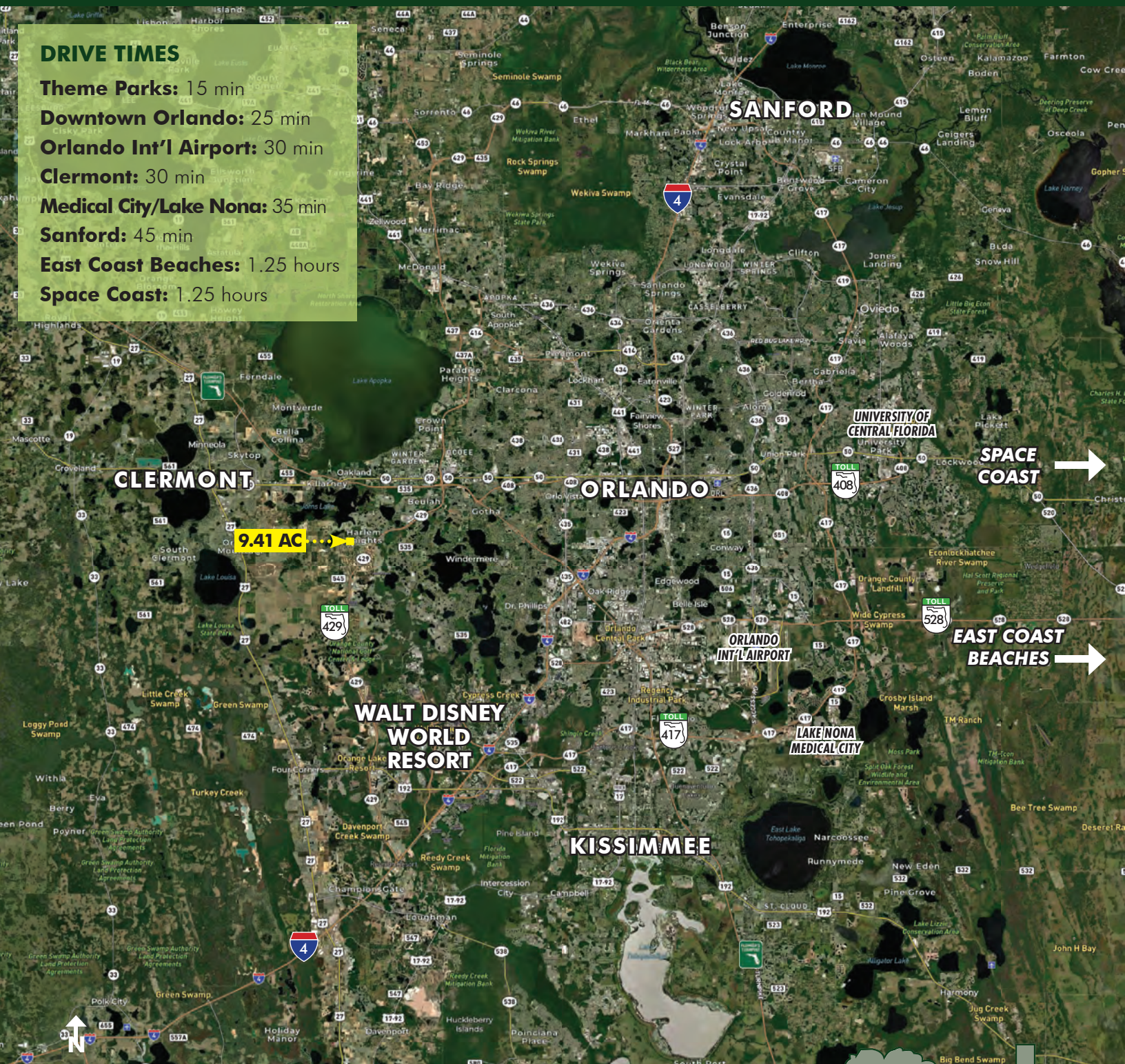
**Clermont: 30 min**

**Medical City/Lake Nona: 35 min**

**Sanford: 45 min**

**East Coast Beaches: 1.25 hours**

**Space Coast: 1.25 hours**



## LOCATION MAP

**MAURY L. CARTER & ASSOCIATES, INC.**

Licensed Real Estate Brokers | [www.maurycarter.com](http://www.maurycarter.com) | 407-422-3144





**FOR  
SALE**

## **WINTER GARDEN PRODUCING ORANGE GROVE**

3496 Avalon Rd, Winter Garden, FL 34787



**MAURY L. CARTER & ASSOCIATES, INC.**

Licensed Real Estate Brokers | [www.maurycarter.com](http://www.maurycarter.com) | 407-422-3144

