

**FOR
SALE**

SOUTH ORLANDO COMMERCIAL BUILDING

5515 S Orange Ave, Orlando, FL 32809

**PRICE
REDUCED**



ABOUT THE PROPERTY

SIZE .30± acres

PRICE NOW: \$649,000 (was \$699,000)

ZONING ECD: Light Commercial

FLU Commercial

UTILITIES Water, sewer, electric

**ROAD
FRONTAGE** 70'± on S Orange Ave

PARCEL ID 29-23-24-7332-00-050

DESCRIPTION

Great location with pre-existing improvements!

Just 5 miles south of Downtown Orlando with 70 feet of frontage on Orange Ave. Property includes an existing 5,814 SF building. Approximately .30 acre with a great deal of potential for commercial use.

Just minutes to Orlando International Airport, SR 528 and theme park areas!

Seller open to a short-term lease. ***Please contact us for details! Call for a showing today!***

MAURY L. CARTER & ASSOCIATES, INC.

Licensed Real Estate Brokers | www.maurycarter.com | 407-422-3144

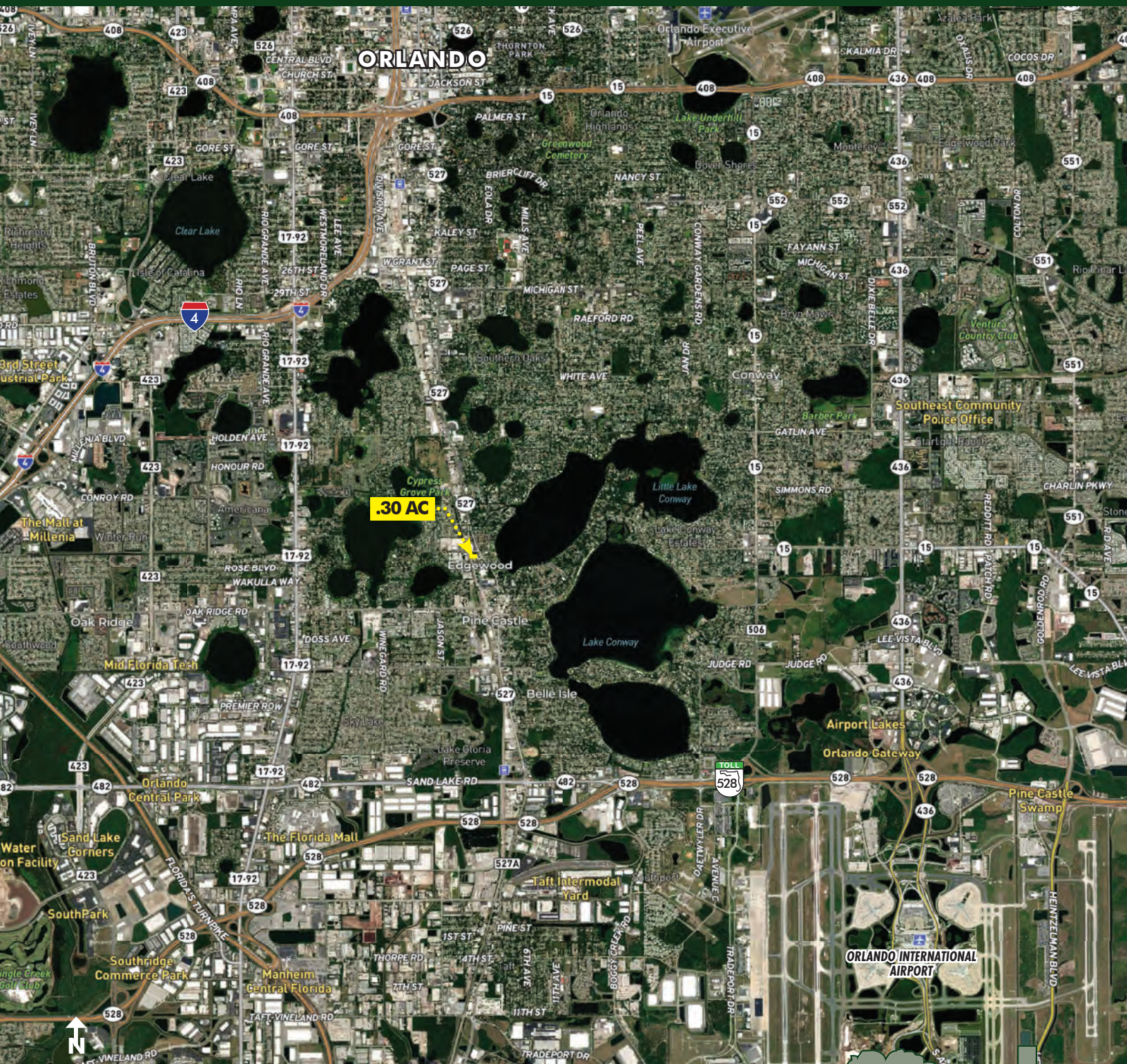


Maury L. Carter & Associates, Inc.SM
Licensed Real Estate Broker

**FOR
SALE**

SOUTH ORLANDO COMMERCIAL BUILDING

5515 S Orange Ave, Orlando, FL 32809



REGIONAL MAP

MAURY L. CARTER & ASSOCIATES, INC.

Licensed Real Estate Brokers | www.maurycarter.com | 407-422-3144



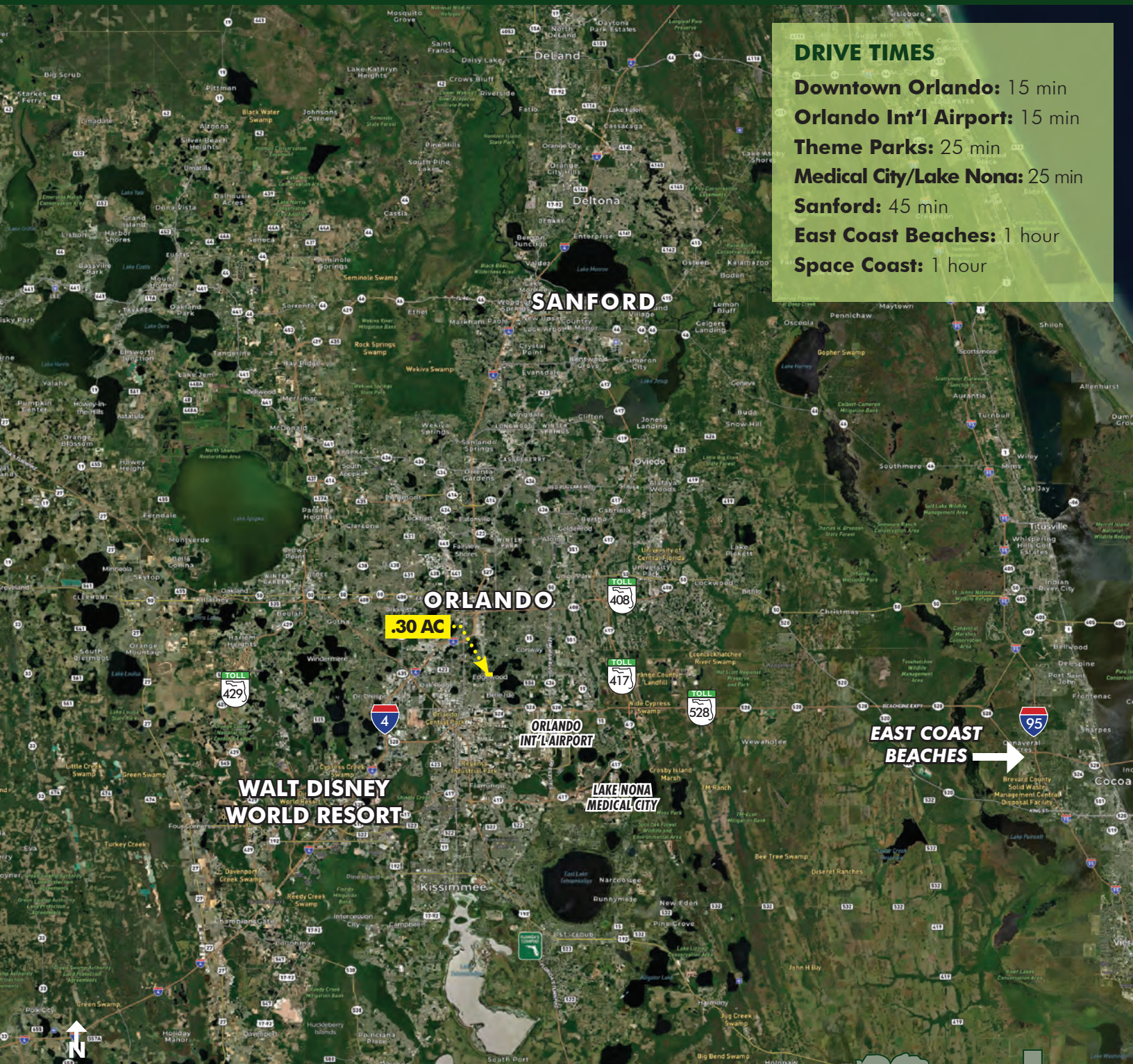
**FOR
SALE**

SOUTH ORLANDO COMMERCIAL BUILDING

5515 S Orange Ave, Orlando, FL 32809

DRIVE TIMES

Downtown Orlando: 15 min
Orlando Int'l Airport: 15 min
Theme Parks: 25 min
Medical City/Lake Nona: 25 min
Sanford: 45 min
East Coast Beaches: 1 hour
Space Coast: 1 hour



LOCATION MAP

MAURY L. CARTER & ASSOCIATES, INC.

Licensed Real Estate Brokers | www.maurycarter.com | 407-422-3144



**FOR
SALE**

SOUTH ORLANDO COMMERCIAL BUILDING

5515 S Orange Ave, Orlando, FL 32809



MAURY L. CARTER & ASSOCIATES, INC.

Licensed Real Estate Brokers | www.maurycarter.com | 407-422-3144

