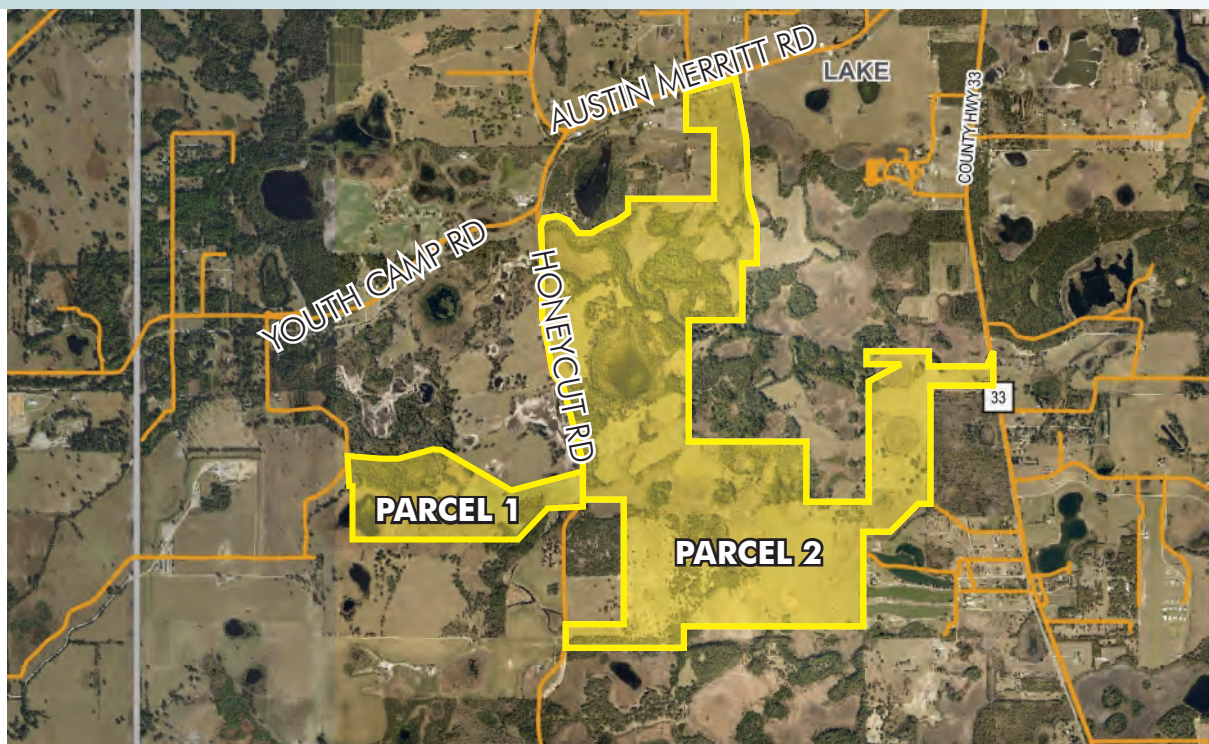


RESIDENTIAL DEVELOPMENT LAND

1,246± acres
Lake County, FL

**PORTION UNDER
CONTRACT**



LAND FOR SALE

BOTH PARCELS

YIELD The two properties combined currently yields up to 1140-1330 residential units. Expansion of sewer/water could increase yield to 2,000± units.

PARCEL 1 UNDER CONTRACT

LOCATION Located south of Youth Camp Road on the west side of Honeycut Road in northwest Lake County. Property can be accessed via Honeycut Road or Sundridge Road.

SIZE 164± acres

ZONING/FUTURE LAND USE The property has a future land use category of Rural Residential which allows 1 unit per acre. The property still has a zoning of Agriculture as it has not been rezoned within the City.

ROAD FRONTAGE 620± on west side of Honeycut Road

UTILITIES City of Mascotte

PARCEL 2

LOCATION Located west of State Road 33, south of Austin Merritt Road, and east of Honeycut Road in northwest Lake County, FL.

SIZE 1,082± acres

ZONING/FUTURE LAND USE This property has been annexed into the City of Mascotte and its Future Land Use designation on the new comprehensive plan is Rural Residential. This Future Land Use allows for 1 unit/acre and would yield 900-1,000 units for the property. A rezoning would be required and should allow for clustering of the residential units.

Offering subject to errors, omission,
prior sale or withdrawal without notice.

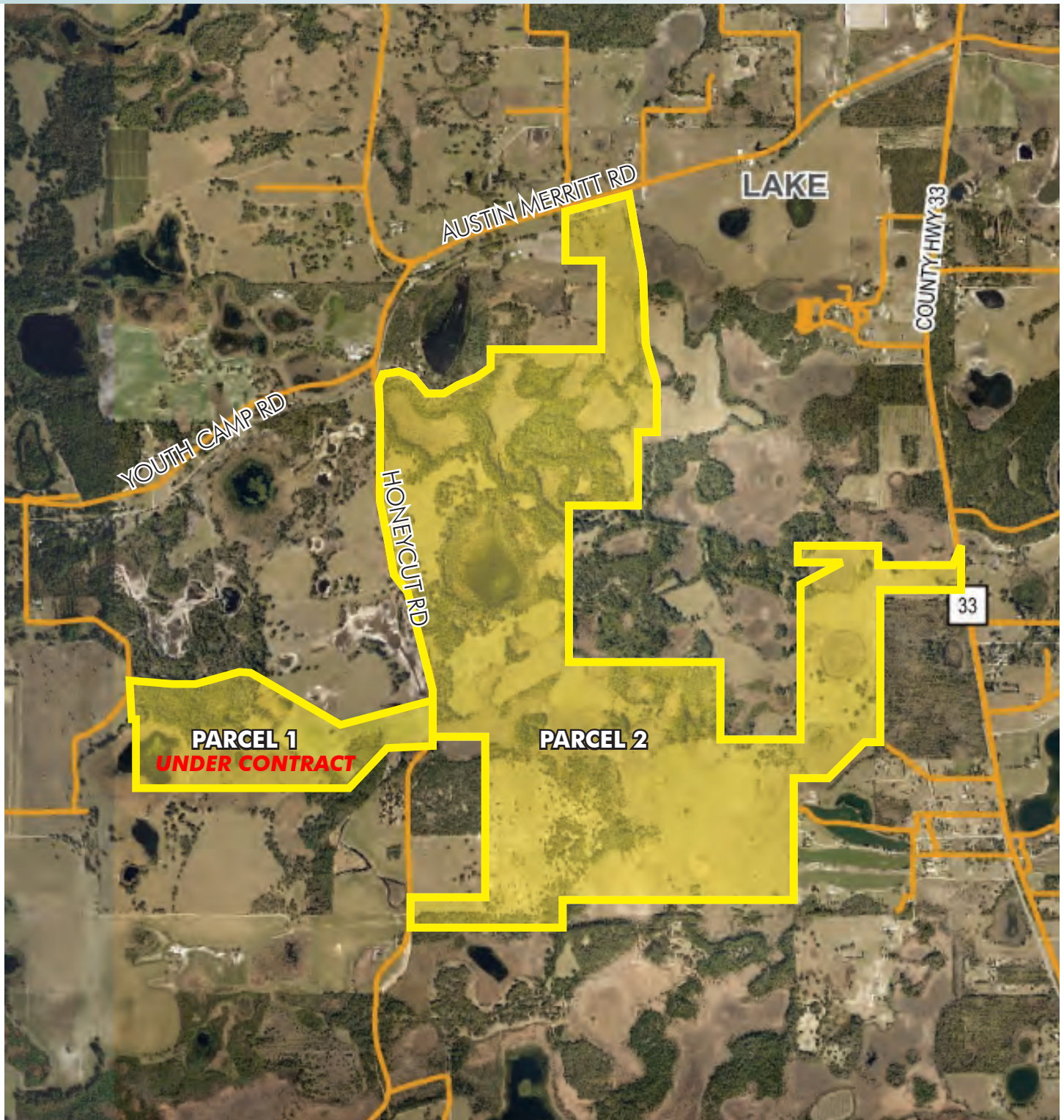
— Commercial Real Estate Investments | Management | Brokerage | Development | Land

Maury L. Carter & Associates, Inc.
407-422-3144 | www.maurycarter.com



RESIDENTIAL DEVELOPMENT LAND

1,246± acres
Lake County, FL



PROPERTY MAP

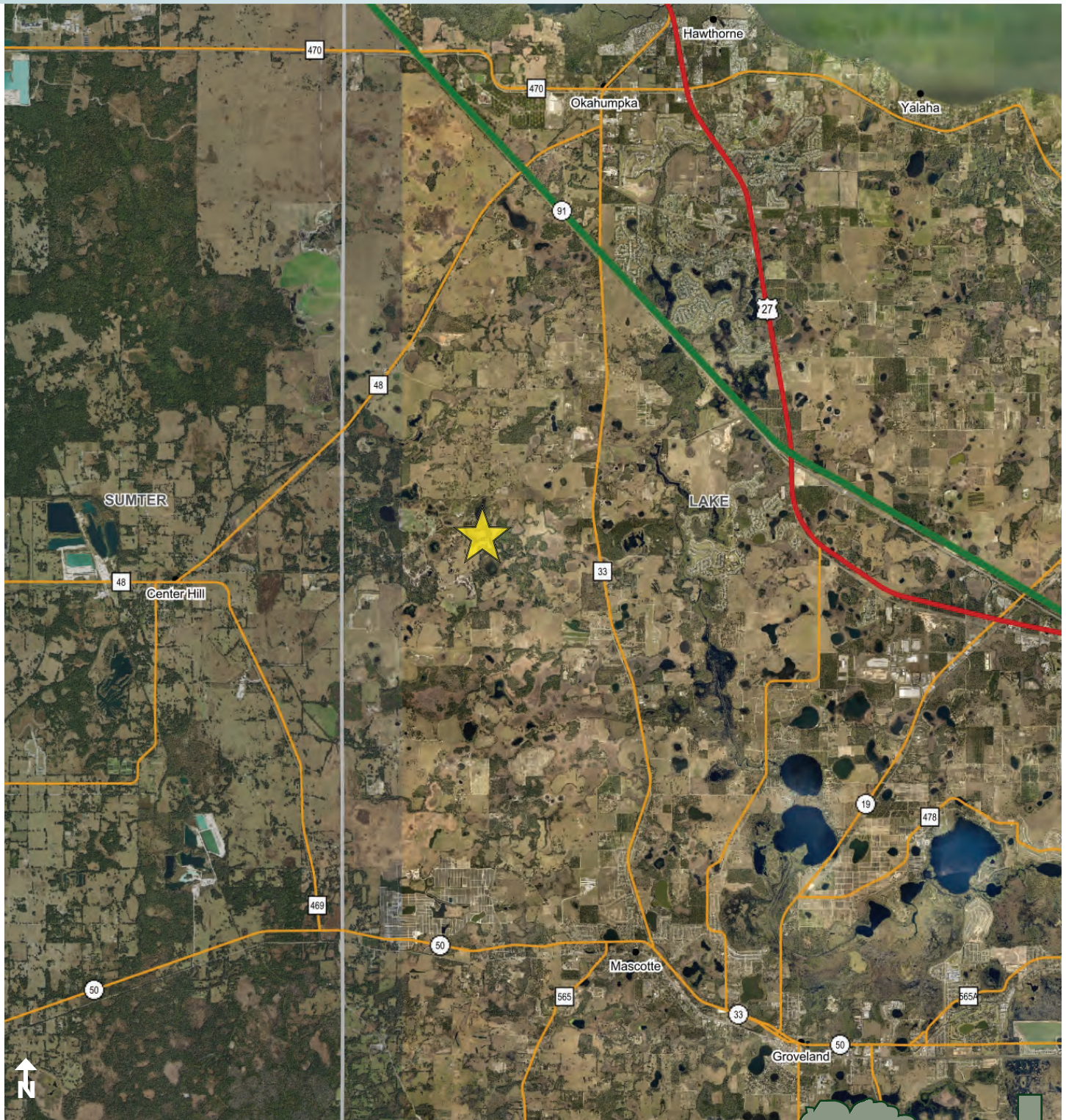
— Commercial Real Estate Investments | Management | Brokerage | Development | Land

Maury L. Carter & Associates, Inc.
407-422-3144 | www.maurycarter.com



RESIDENTIAL DEVELOPMENT LAND

1,246± acres
Lake County, FL



REGIONAL MAP

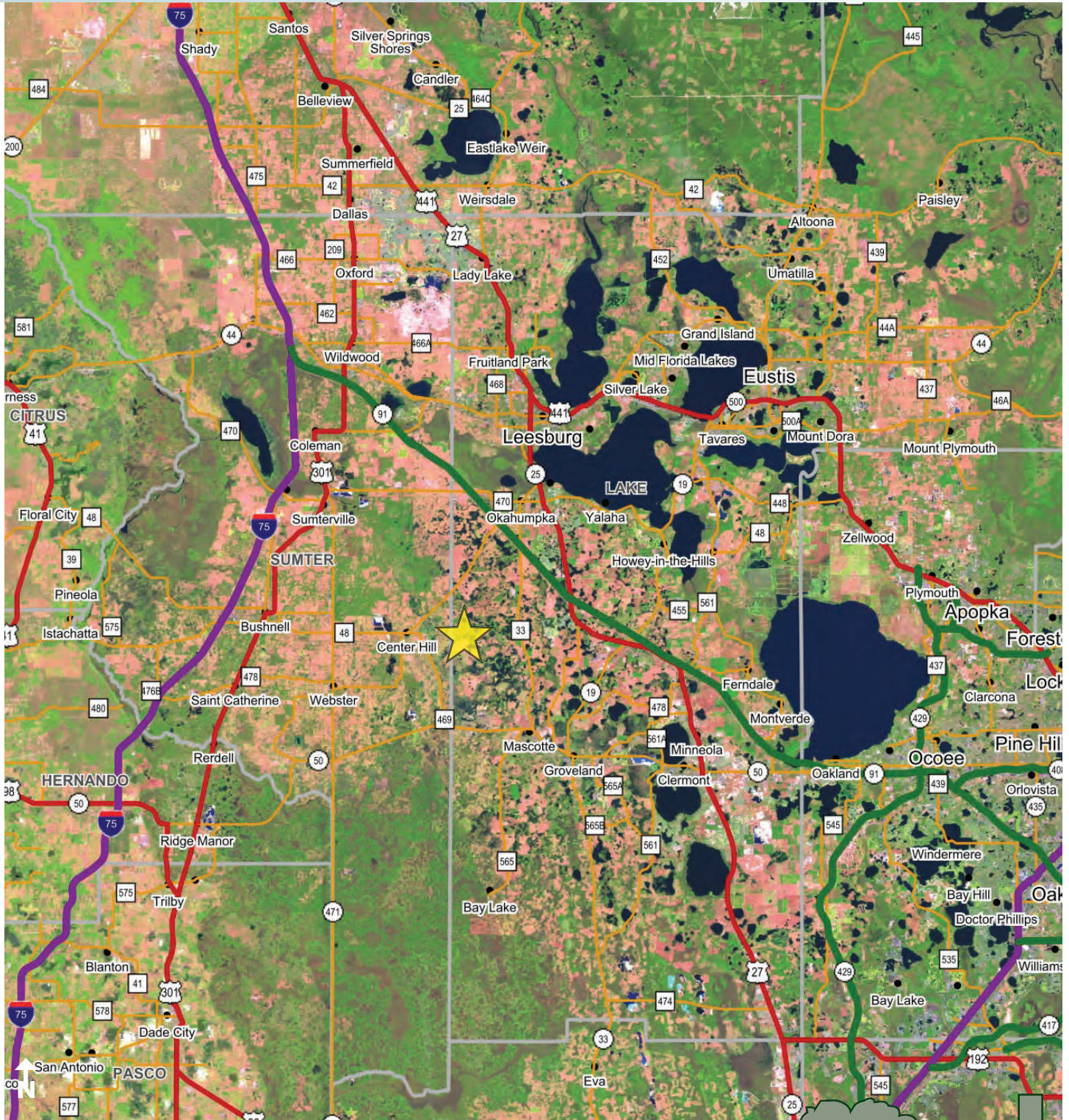
— Commercial Real Estate Investments | Management | Brokerage | Development | Land —

Maury L. Carter & Associates, Inc.
407-422-3144 | www.maurycarter.com



RESIDENTIAL DEVELOPMENT LAND

1,246± acres
Lake County, FL



LOCATION MAP

— Commercial Real Estate Investments | Management | Brokerage | Development | Land

Maury L. Carter & Associates, Inc.
407-422-3144 | www.maurycarter.com



RESIDENTIAL DEVELOPMENT LAND

Lake County, FL

Langley Estates developer awaiting Mascotte City Council vote

By Yvette C. Hammett | June 30, 2022 1:00pm

"The details have all been agreed upon for the massive master-planned Langley Estates project in Mascotte, but a date has not yet been set for the City Council to approve the development agreement. However, City Manager Annamarie Reno said it could go on the council agenda as early as July."



<https://www.growthspotter.com/news/lake-county-developments/gs-news-mascotte-langley-estates-piper-20220630-qc5flvygnbfvdkr7j4mo5zhrqm-story.html>

— Commercial Real Estate Investments | Management | Brokerage | Development | Land —

Maury L. Carter & Associates, Inc.
407-422-3144 | www.maurycarter.com

