

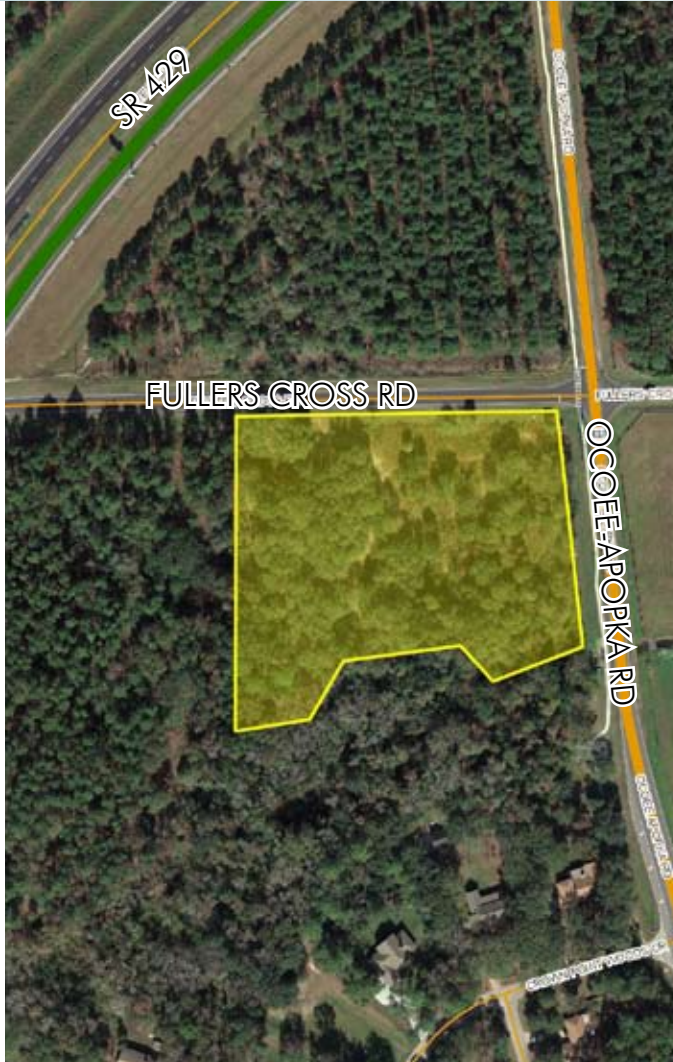
OCOEE-APOPKA RD COMMERCIAL

5± acres

Orange County, FL

**UNDER
CONTRACT**

LAND FOR SALE



LOCATION

Located on the SW corner of Fullers Cross Road and Ocoee-Apopka Road.

SIZE

5± acres

PRICE

WAS \$1,250,000 (\$5.74/sf)
NOW \$1,000,000 (\$4.59/sf)

ZONING/FUTURE LAND USE

Commercial PUD (C-2). May build up to 44,000 sf of retail space. Permitted uses are the same as those permitted in the City of Ocoee C-2 Community Commercial District.

UTILITIES

Water provided by City of Ocoee. On-site septic will be utilized until such time as City sewer service is available. Sanitary connection located ½± mile south of property.

ROAD FRONTAGE

508'± on Fullers Cross Road
352'± on Ocoee-Apopka Road

Offering subject to errors, omission, prior sale or withdrawal without notice.

— Commercial Real Estate Investments | Management | Brokerage | Development | Land

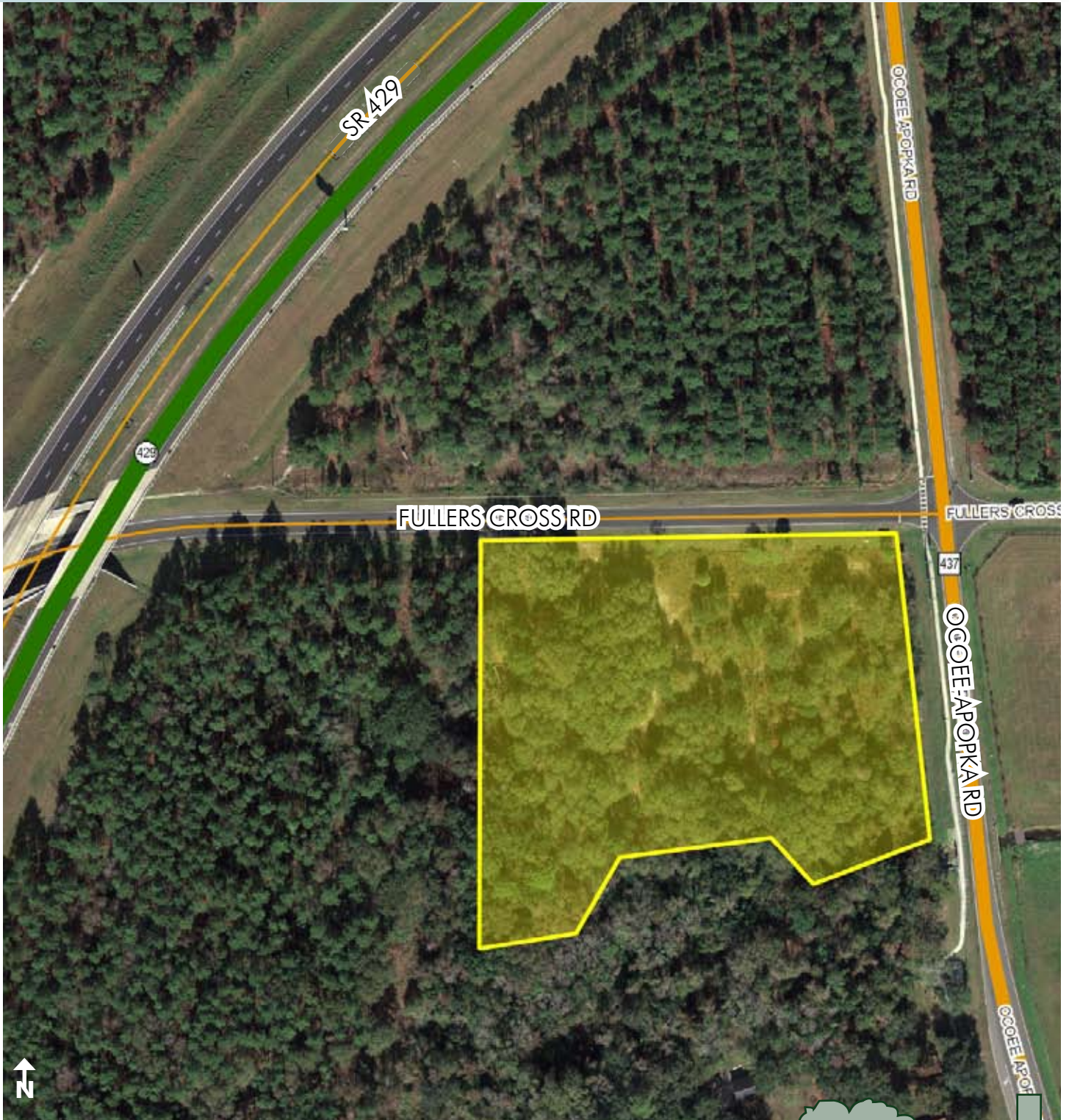
Maury L. Carter & Associates, Inc.
407-422-3144 | www.maurycarter.com



OCOEE-APOPKA RD COMMERCIAL

5± acres

Orange County, FL



PROPERTY MAP

— Commercial Real Estate Investments | Management | Brokerage | Development | Land

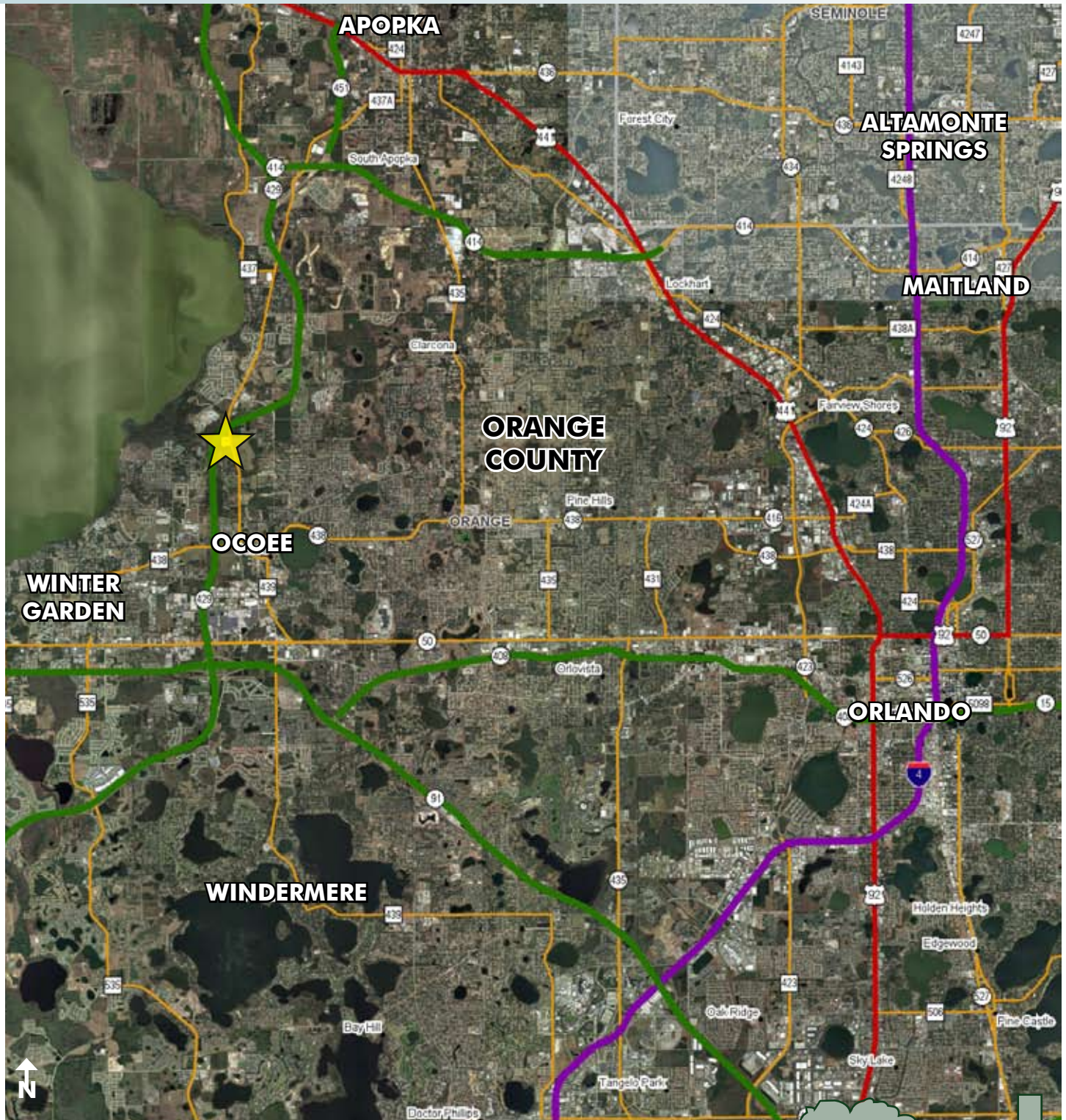
Maury L. Carter & Associates, Inc.
407-422-3144 | www.maurycarter.com



OCOEE-APOPKA RD COMMERCIAL

5± acres

Orange County, FL



LOCATION MAP

— Commercial Real Estate Investments | Management | Brokerage | Development | Land

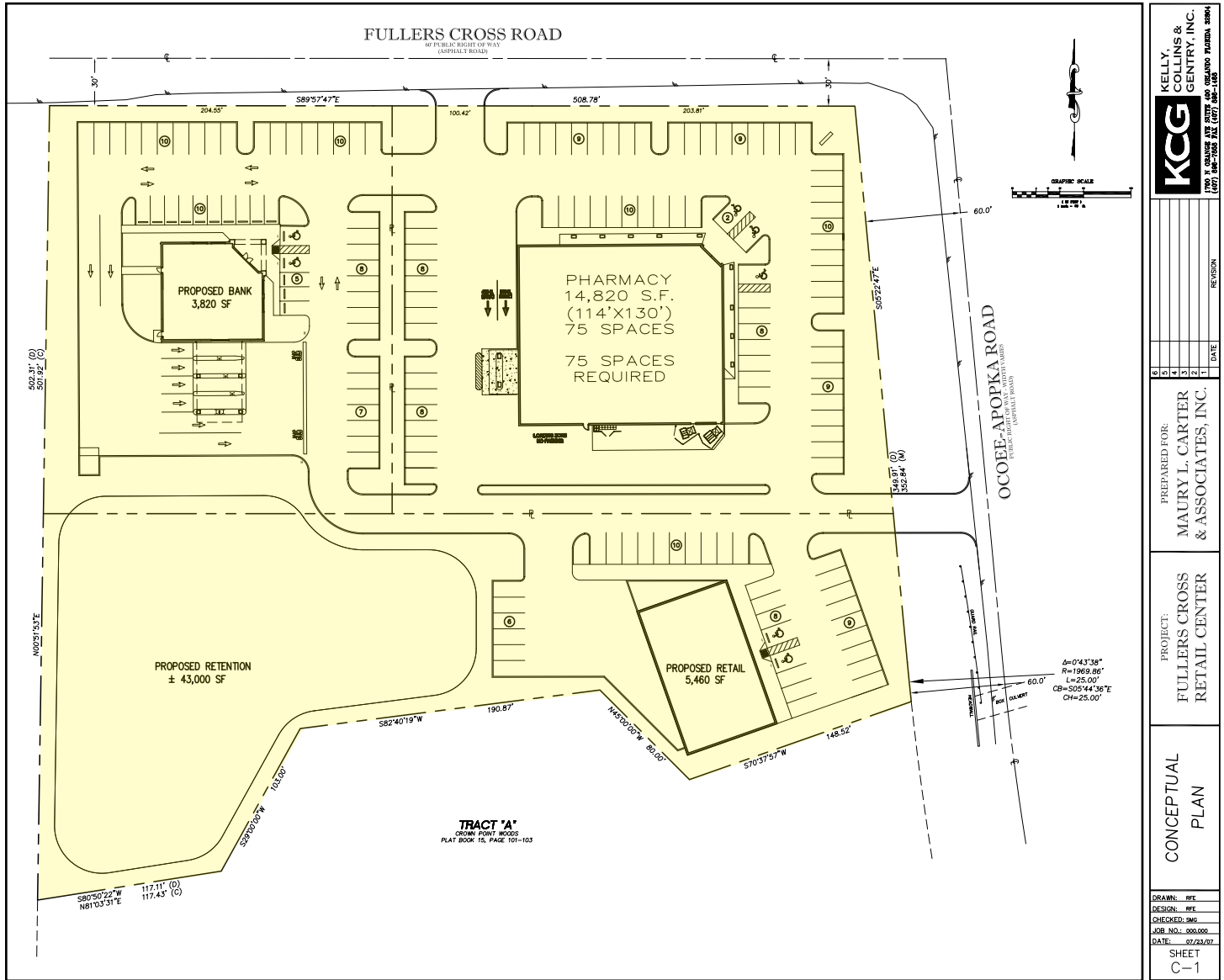
Maury L. Carter & Associates, Inc.
407-422-3144 | www.maurycarter.com



OCOEE-APOPKA RD COMMERCIAL

5± acres

Orange County, FL



CONCEPT PLAN

— Commercial Real Estate Investments | Management | Brokerage | Development | Land

Maury L. Carter & Associates, Inc.
 407-422-3144 | www.maurycarter.com

