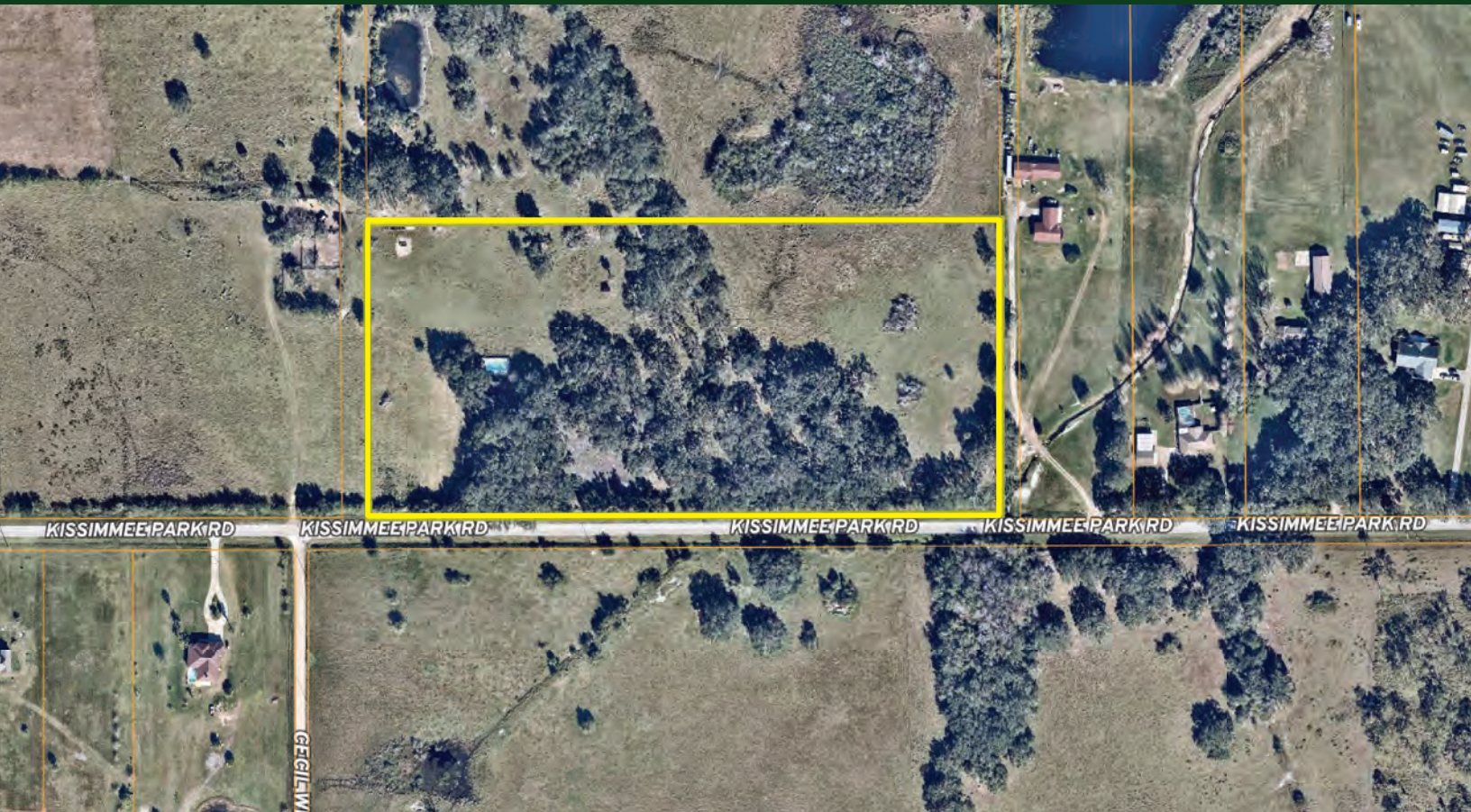


**FOR  
SALE**

# KISSIMMEE PARK DEVELOPMENT LAND

4100 Kissimmee Park Rd, St. Cloud, FL 34772



## ABOUT THE PROPERTY

**SIZE** 15± acres

**PRICE** \$2,200,000

**ZONING** MXD - Mixed Use

**FLU** MXD - Mixed Use

**UTILITIES** Available soon

**ROAD FRONTAGE** 1,200'± on Kissimmee Park Rd

**PARCEL ID** 24-26-29-3670-0021-0070

## DESCRIPTION

**Prime property situated on 15 acres in the heart of growth in Osceola County, Florida.** The land use is mixed use which allows for a variety of densities and uses. This is a very hot area of Central Florida development! Property includes a 2,300 s.f. home with 3/2 concrete block construction. The home was constructed in 1965 and is being sold as is. This property has great development potential in the heart of Osceola County. **Call today for more information!**

**MAURY L. CARTER & ASSOCIATES, INC.**

Licensed Real Estate Brokers | [www.maurycarter.com](http://www.maurycarter.com) | 407-422-3144



**FOR  
SALE**

# KISSIMMEE PARK DEVELOPMENT LAND

4100 Kissimmee Park Rd, St. Cloud, FL 34772



**MAURY L. CARTER & ASSOCIATES, INC.**

Licensed Real Estate Brokers | [www.maurycarter.com](http://www.maurycarter.com) | 407-422-3144

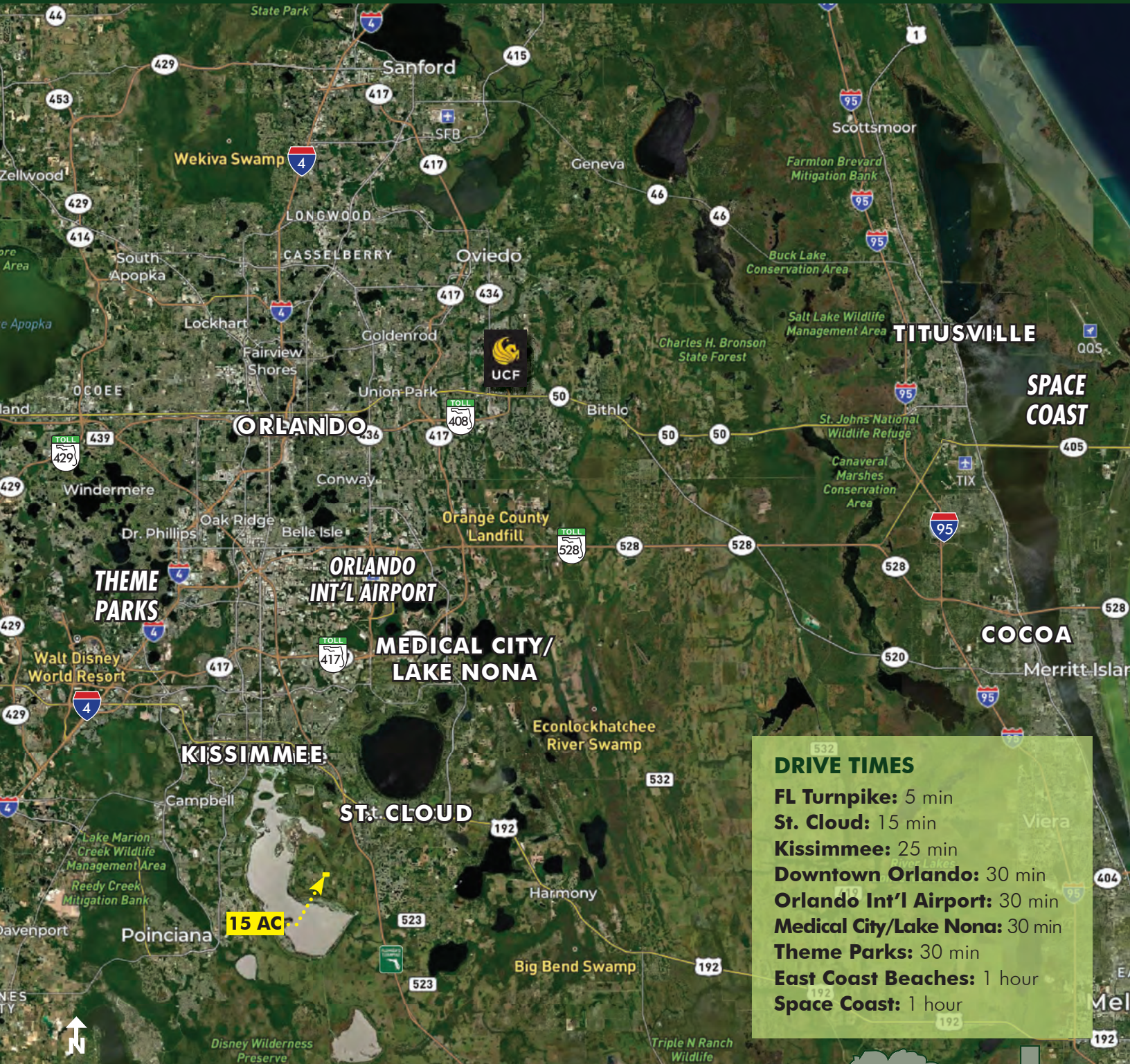




**FOR  
SALE**

# KISSIMMEE PARK DEVELOPMENT LAND

4100 Kissimmee Park Rd, St. Cloud, FL 34772



**LOCATION MAP**

**MAURY L. CARTER & ASSOCIATES, INC.**

Licensed Real Estate Brokers | [www.maurycarter.com](http://www.maurycarter.com) | 407-422-3144

