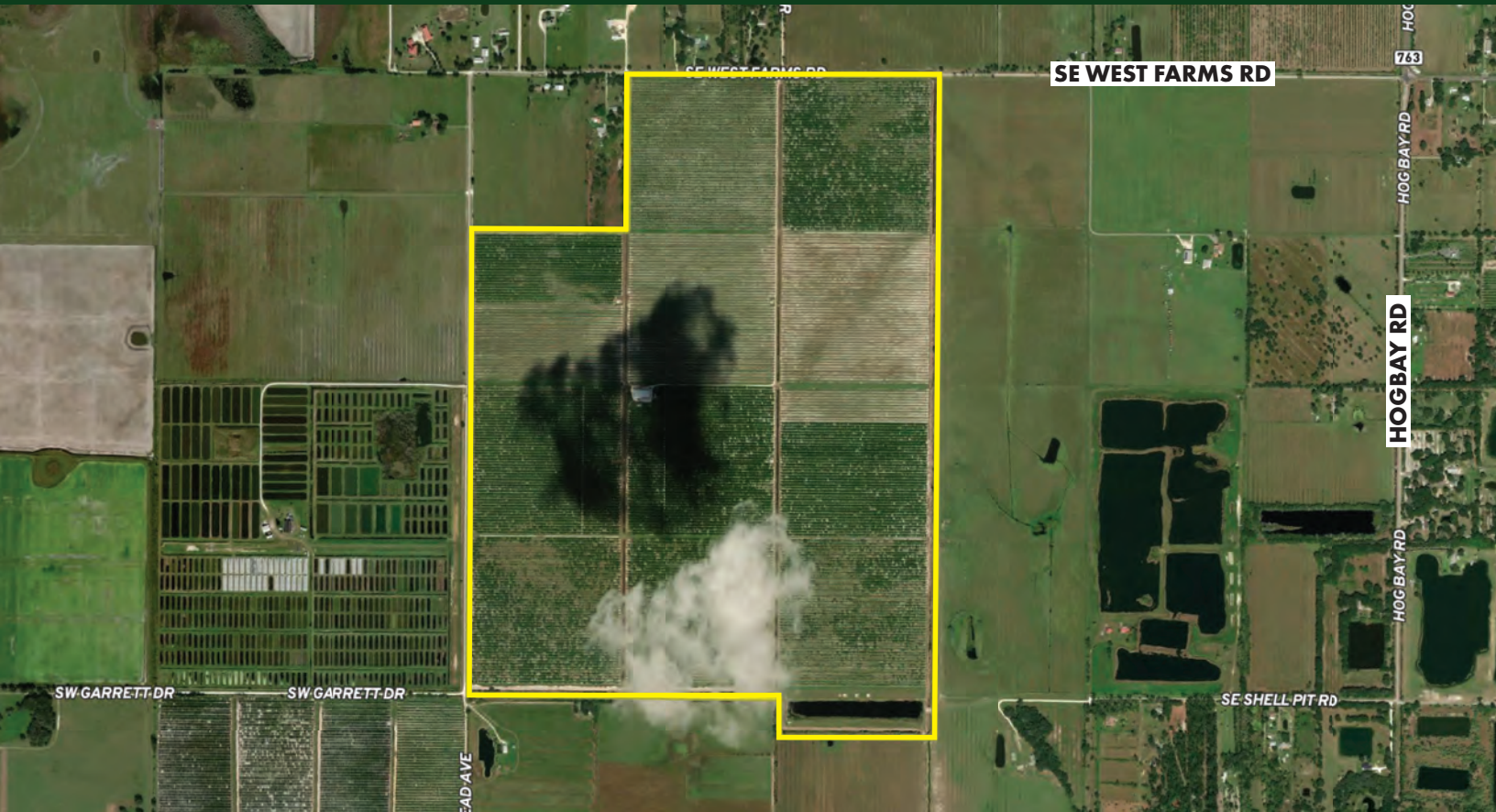


**FOR  
SALE**

# PRAIRIE CREEK GROVE

1923 SE West Farms Rd, Arcadia, FL 34266



## ABOUT THE PROPERTY

**SIZE** 450± acres

**PRICE** \$4,450,000

**ZONING** AG

**FLU** AG

**UTILITIES** Electricity; 2 -12" wells and Tailwater Recovery Pond

**ROAD FRONTAGE** 2,600'± on SE West Farms Rd

## DESCRIPTION

Located west of Hog Bay Rd., south of Arcadia is this 450± acre Valencia grove. Many young trees and resets can be found throughout. A large surface water irrigation pond, in combination with two 12" deep wells, provides this grove with ample clean water. The property has a good internal road system and very well maintained ditches. The site enjoys 1/2 mile of road frontage, allowing for easier subdividing, if so desired in the future.

**Call for a showing today!**

**MAURY L. CARTER & ASSOCIATES, INC.**

Licensed Real Estate Brokers | [www.maurycarter.com](http://www.maurycarter.com) | 407-422-3144



**FOR  
SALE**

# PRAIRIE CREEK GROVE

1923 SE West Farms Rd, Arcadia, FL 34266



**REGIONAL MAP**

**MAURY L. CARTER & ASSOCIATES, INC.**

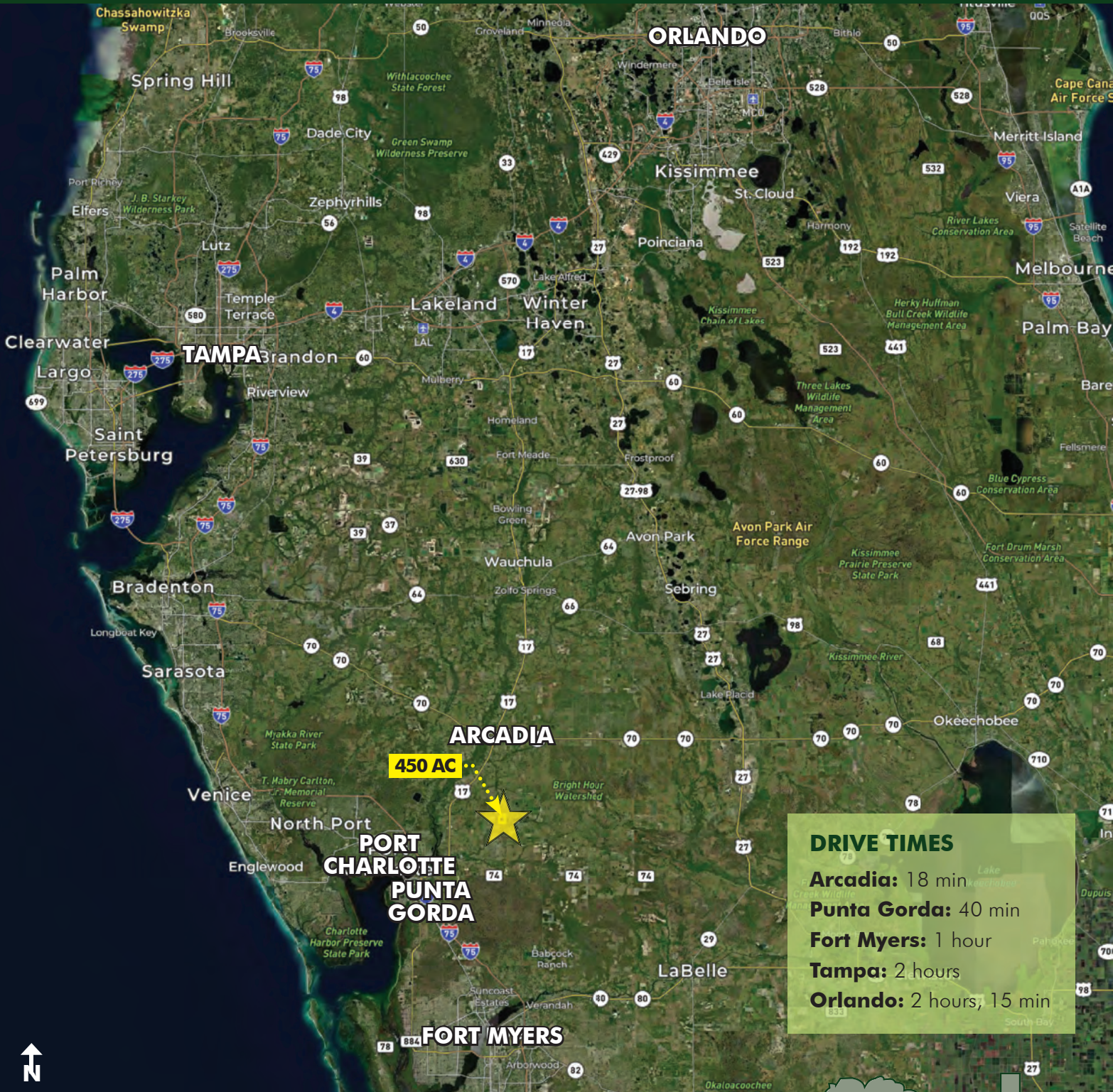
Licensed Real Estate Brokers | [www.maurycarter.com](http://www.maurycarter.com) | 407-422-3144



**FOR  
SALE**

# PRAIRIE CREEK GROVE

1923 SE West Farms Rd, Arcadia, FL 34266



**LOCATION MAP**

**MAURY L. CARTER & ASSOCIATES, INC.**

Licensed Real Estate Brokers | [www.maurycarter.com](http://www.maurycarter.com) | 407-422-3144



**FOR  
SALE**

# PRAIRIE CREEK GROVE

1923 SE West Farms Rd, Arcadia, FL 34266



**FOR  
SALE**

# PRAIRIE CREEK GROVE

1923 SE West Farms Rd, Arcadia, FL 34266



**FOR  
SALE**

# PRAIRIE CREEK GROVE

1923 SE West Farms Rd, Arcadia, FL 34266

