

**FOR  
SALE**

# COOLED PACKING FACILITY WITH IRRIGATED FARMLAND

1301 Blueberry Rd, Sebring, FL 33872



## ABOUT THE PROPERTY

**SIZE** 82± acres

**PRICE** \$2,850,000

**ZONING** AU (multiple agricultural and commercial uses available)

**FLU** AG/Agriculture

**UTILITIES** Power; multiple wells and surface irrigation pond

**ACCESS** Semi-private road

**PARCEL IDs** C203428A0000800000  
C203428A0000200010  
C203428A0000200060

## DESCRIPTION

Offered for sale is 82± acres of irrigated ag land with multiple deep wells and a surface withdrawal pond. This farm was formerly used as a blueberry operation. This site also features a 30,000± sqft packing and cold storage facility with pre-coolers. Also on the property is a caretaker's home. Situated down a semi-private road, the property is nicely isolated while being located just 2.7 miles from Highway 27. This site could be used for a multitude of agriculture pursuits or repurposed for a commercial operation that needs storage and a lay-down yard. The property would also function wonderfully as a private ranch and farm with residence.

***Call for a showing today!***

**MAURY L. CARTER & ASSOCIATES, INC.**

Licensed Real Estate Brokers | [www.maurycarter.com](http://www.maurycarter.com) | 407-422-3144

Offering subject to errors, omission, prior sale or withdrawal without notice.



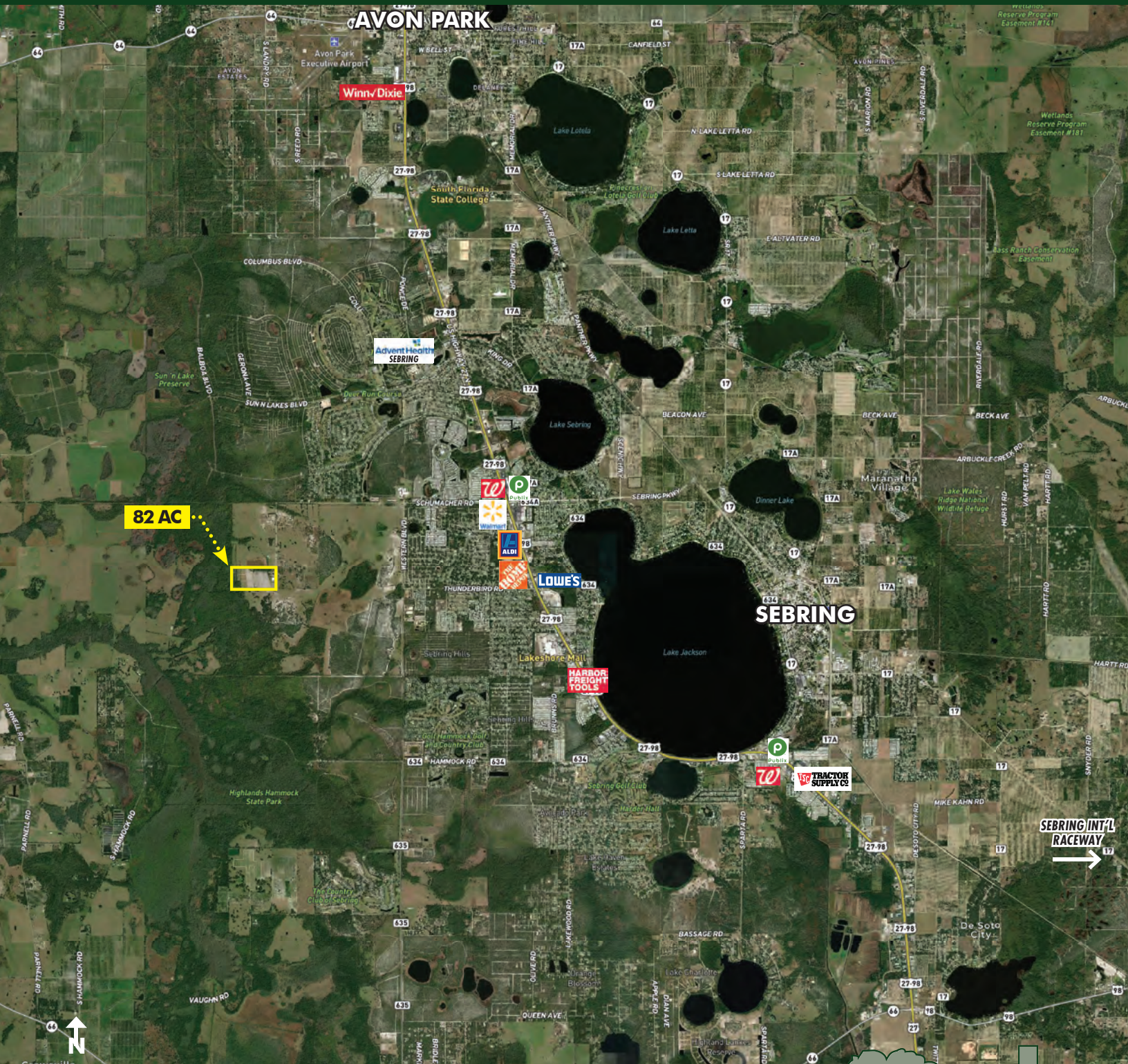
Maury L. Carter & Associates, Inc.<sup>SM</sup>  
Licensed Real Estate Broker



**FOR  
SALE**

# COOLED PACKING FACILITY WITH IRRIGATED FARMLAND

1301 Blueberry Rd, Sebring, FL 33872



**REGIONAL MAP**

**MAURY L. CARTER & ASSOCIATES, INC.**

Licensed Real Estate Brokers | [www.maurycarter.com](http://www.maurycarter.com) | 407-422-3144

Offering subject to errors, omission, prior sale or withdrawal without notice.





**FOR  
SALE**

# COOLED PACKING FACILITY WITH IRRIGATED FARMLAND

1301 Blueberry Rd, Sebring, FL 33872

## DRIVE TIMES

**Sebring:** 15 min

**Avon Park:** 20 min

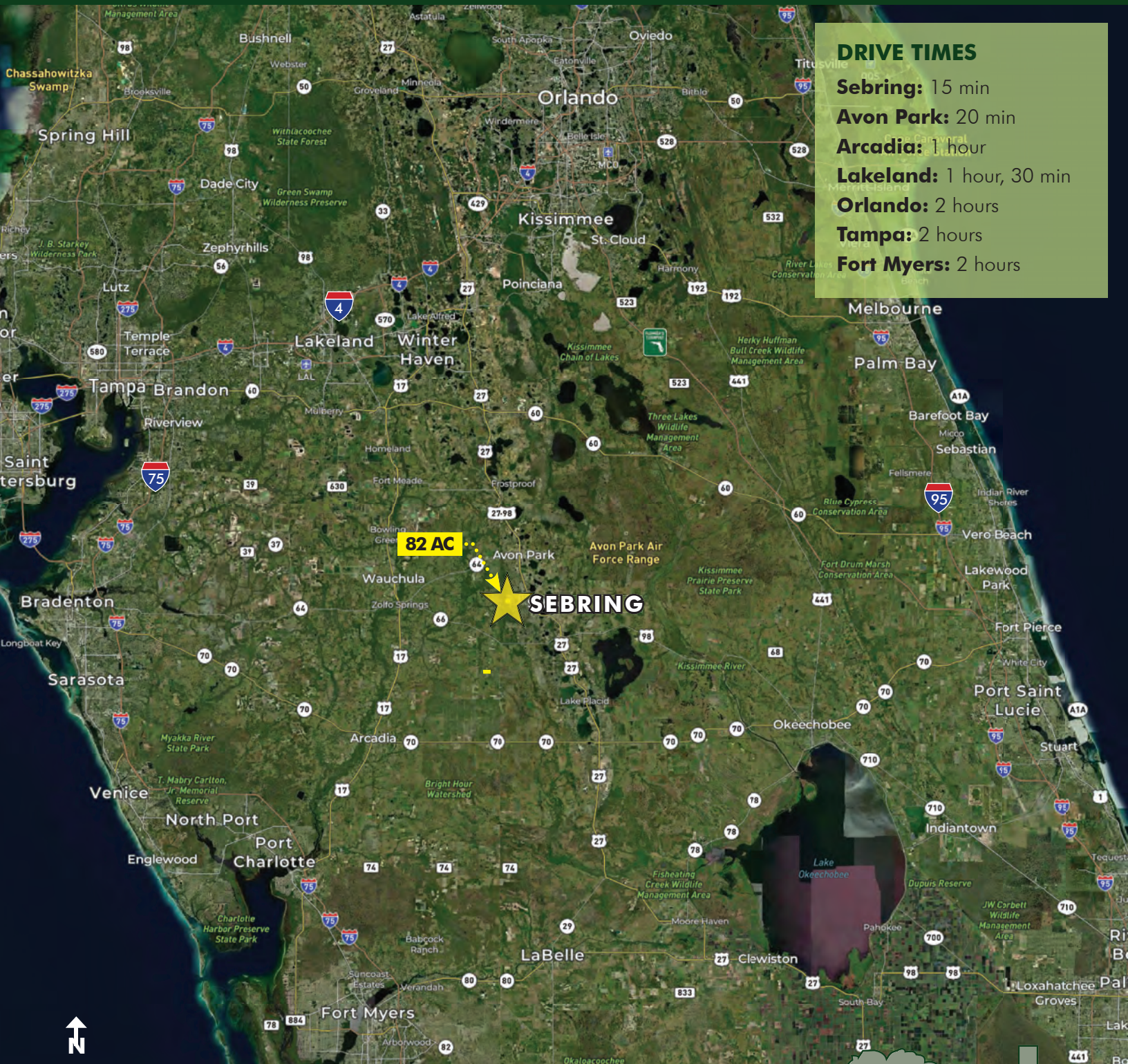
**Arcadia:** 1 hour

**Lakeland:** 1 hour, 30 min

**Orlando:** 2 hours

**Tampa:** 2 hours

**Fort Myers:** 2 hours



**LOCATION MAP**

**MAURY L. CARTER & ASSOCIATES, INC.**

Licensed Real Estate Brokers | [www.maurycarter.com](http://www.maurycarter.com) | 407-422-3144

Offering subject to errors, omission, prior sale or withdrawal without notice.

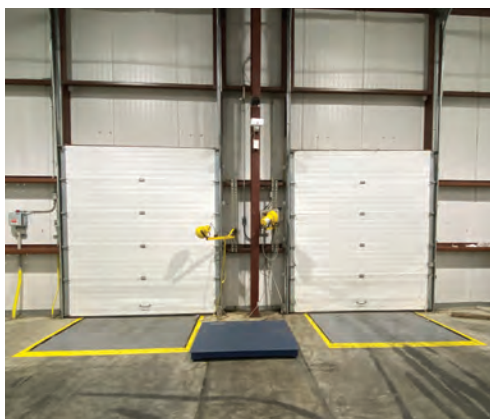




**FOR  
SALE**

# COOLED PACKING FACILITY WITH IRRIGATED FARMLAND

1301 Blueberry Rd, Sebring, FL 33872



**MAURY L. CARTER & ASSOCIATES, INC.**

Licensed Real Estate Brokers | [www.maurycarter.com](http://www.maurycarter.com) | 407-422-3144

Offering subject to errors, omission, prior sale or withdrawal without notice.





**FOR  
SALE**

# COOLED PACKING FACILITY WITH IRRIGATED FARMLAND

1301 Blueberry Rd, Sebring, FL 33872



**MAURY L. CARTER & ASSOCIATES, INC.**

Licensed Real Estate Brokers | [www.maurycarter.com](http://www.maurycarter.com) | 407-422-3144

Offering subject to errors, omission, prior sale or withdrawal without notice.





**FOR  
SALE**

# COOLED PACKING FACILITY WITH IRRIGATED FARMLAND

1301 Blueberry Rd, Sebring, FL 33872



**MAURY L. CARTER & ASSOCIATES, INC.**

Licensed Real Estate Brokers | [www.maurycarter.com](http://www.maurycarter.com) | 407-422-3144

Offering subject to errors, omission, prior sale or withdrawal without notice.

