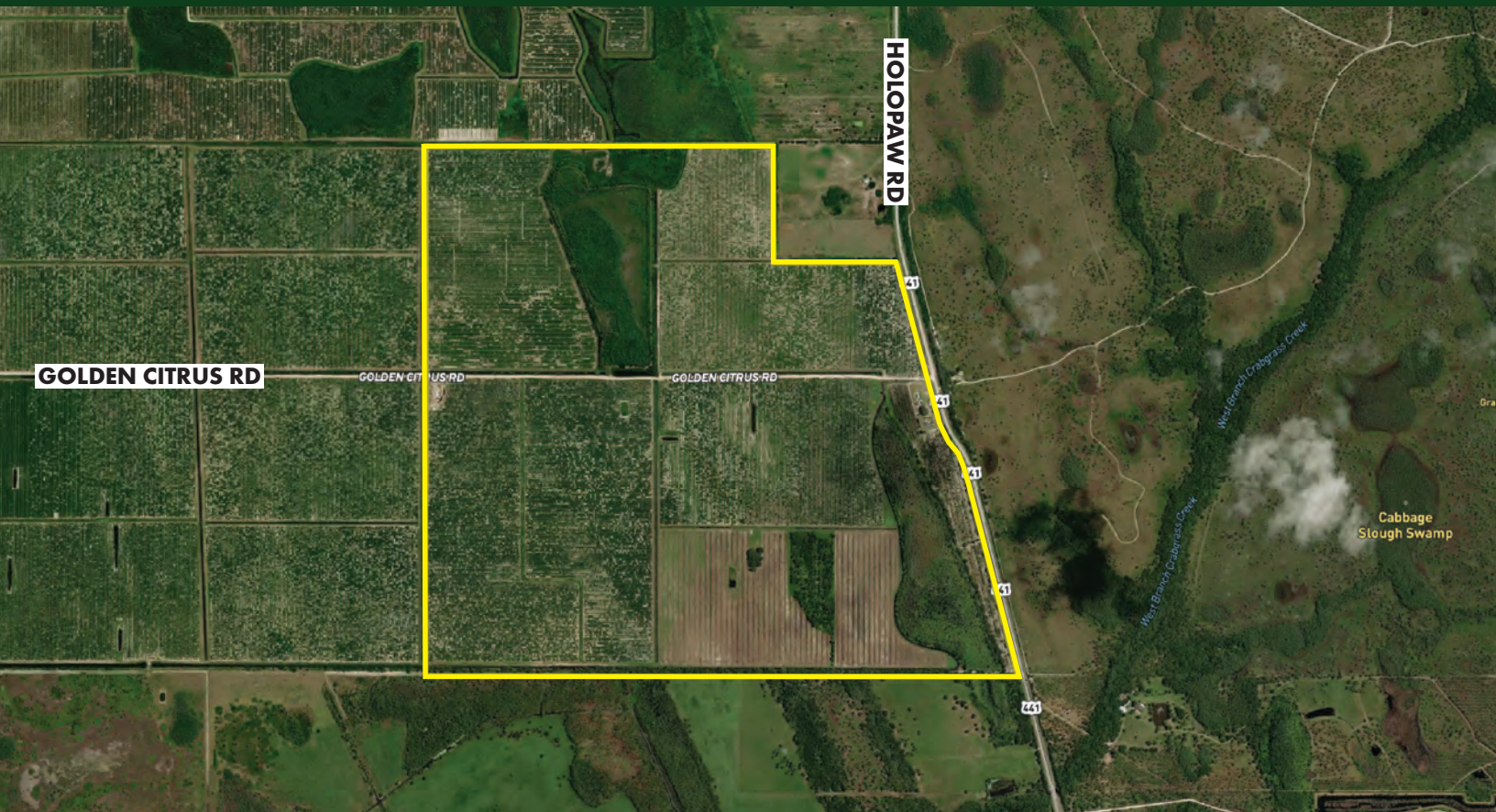


**FOR
SALE**

CITRUS GROVE IN OSCEOLA COUNTY

6220 Holopaw Rd, St. Cloud, FL 34773



ABOUT THE PROPERTY

SIZE 766± acres

PRICE Please call for pricing

ZONING A/C

FLU Rural Agriculture

UTILITIES Wells on diesel power units and micro-jet irrigation

PARCEL IDs 35-27-32-0000-0010-0000
36-27-32-0000-0020-0000

DESCRIPTION

This grove is located on Golden Citrus Road in Holopaw. The grove has a good interior road network with well maintained canals. Golden Citrus Road runs through the property to provide good access to all the property.

Call for a showing today!

MAURY L. CARTER & ASSOCIATES, INC.

Licensed Real Estate Brokers | www.maurycarter.com | 407-422-3144

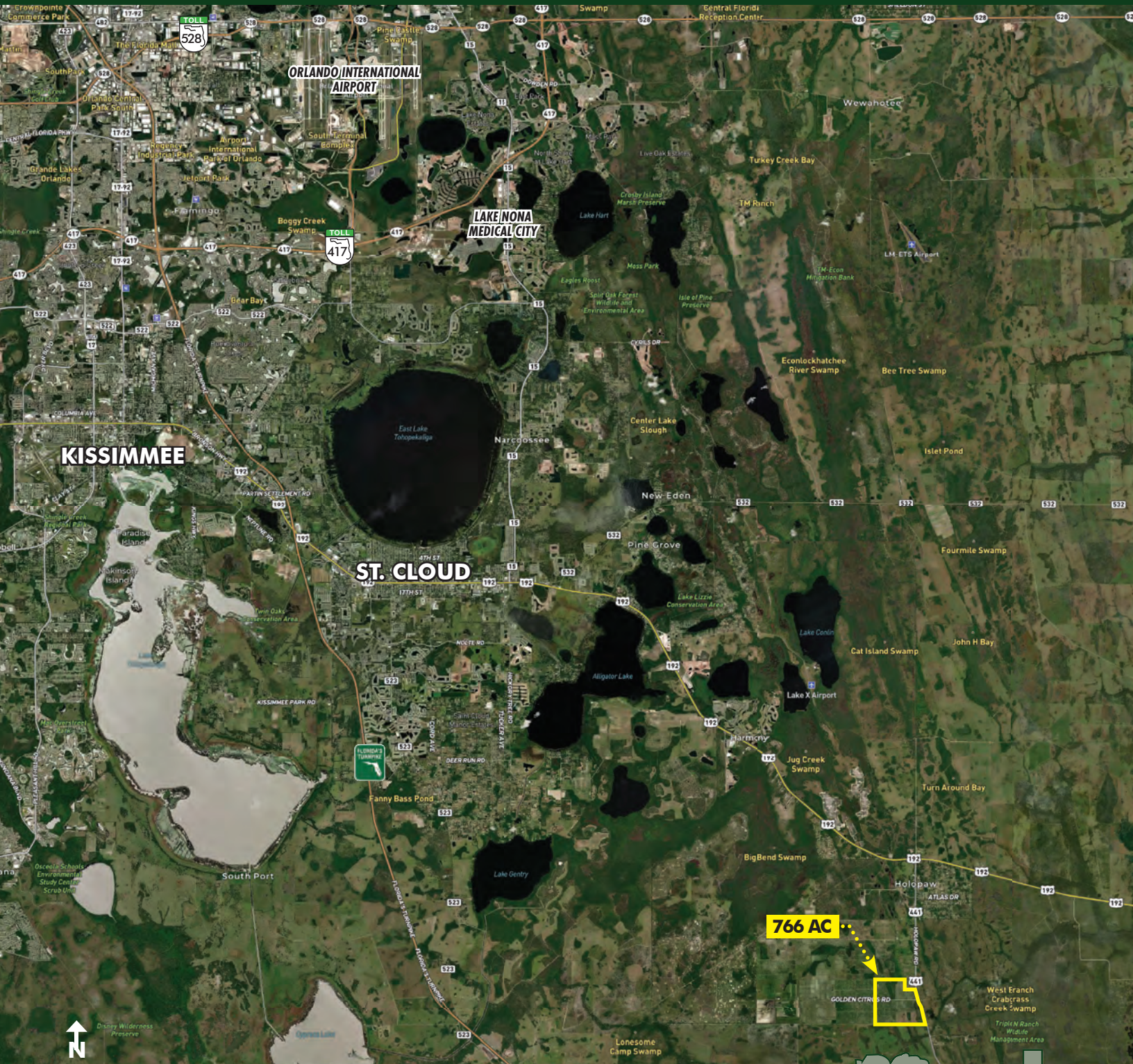
Offering subject to errors, omission, prior sale or withdrawal without notice.



**FOR
SALE**

CITRUS GROVE IN OSCEOLA COUNTY

6220 Holopaw Rd, St. Cloud, FL 34773



REGIONAL MAP

MAURY L. CARTER & ASSOCIATES, INC.

Licensed Real Estate Brokers | www.maurycarter.com | 407-422-3144

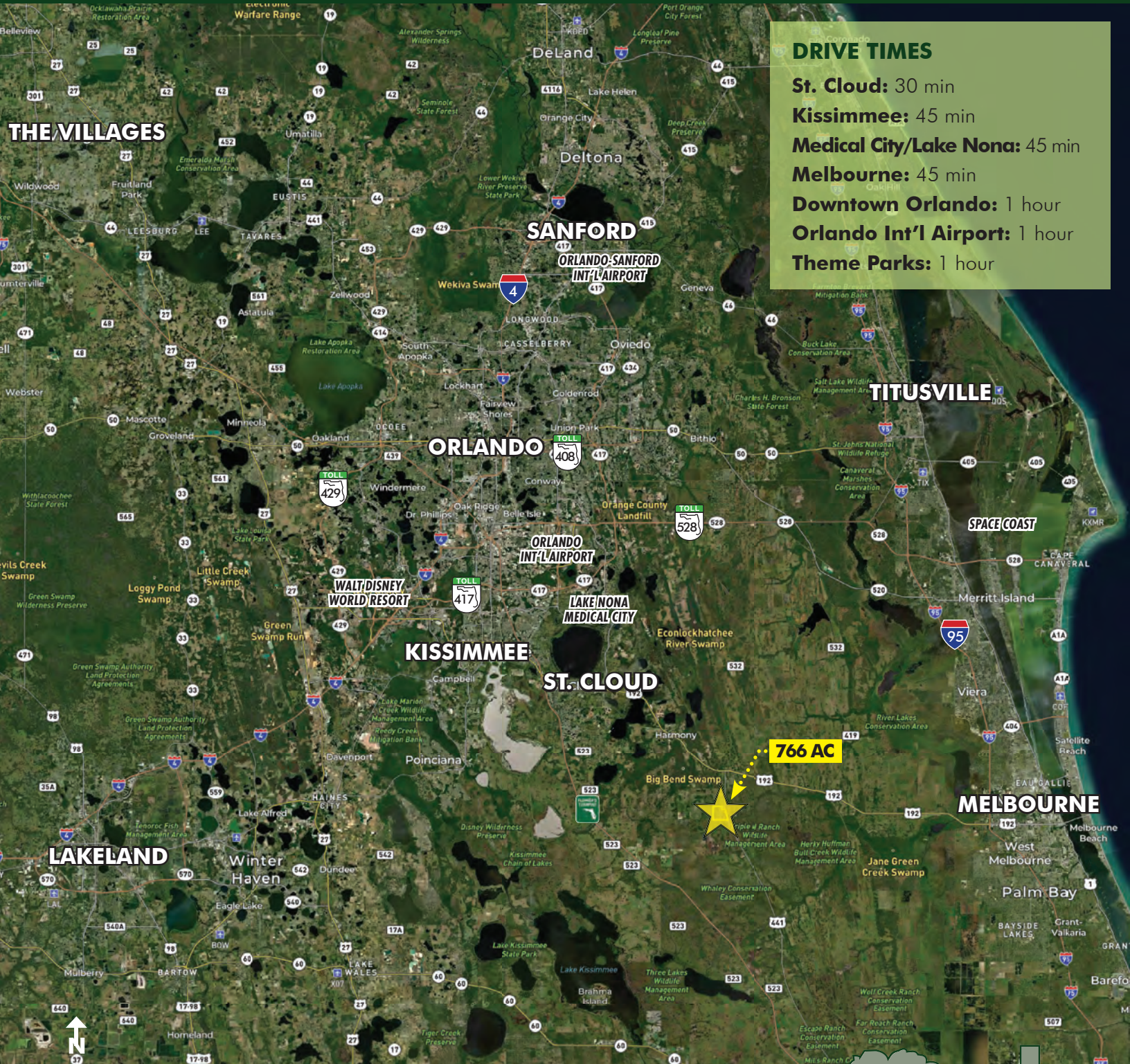
Offering subject to errors, omission, prior sale or withdrawal without notice.



**FOR
SALE**

CITRUS GROVE IN OSCEOLA COUNTY

6220 Holopaw Rd, St. Cloud, FL 34773



DRIVE TIMES

- St. Cloud:** 30 min
- Kissimmee:** 45 min
- Medical City/Lake Nona:** 45 min
- Melbourne:** 45 min
- Downtown Orlando:** 1 hour
- Orlando Int'l Airport:** 1 hour
- Theme Parks:** 1 hour

LOCATION MAP

MAURY L. CARTER & ASSOCIATES, INC.

Licensed Real Estate Brokers | www.maurycarter.com | 407-422-3144

Offering subject to errors, omission, prior sale or withdrawal without notice.

