

**FOR
SALE**

ORANGE COUNTY COMMERCIAL LAND

1010 Fairvilla Rd, Orlando, FL 32808

**UNDER
CONTRACT**



ABOUT THE PROPERTY

SIZE .90± acre

PRICE \$550,000

ZONING C-1

FLU C - Commercial

ROAD FRONTAGE 370'± on Fairvilla Rd (just before Fairvilla merges into Mercy Dr. - approx. 1,500 ft from Colonial Dr.)

UTILITIES Available nearby

PARCEL IDs 20-22-29-0000-00-030;
20-22-29-0000-00-054

DESCRIPTION

This commercial property is nine-tenths of an acre, located just north of Hwy 50/Colonial Drive and just minutes from Downtown Orlando. The Future Land use is Commercial and the Zoning is C-1. The property is located in the Mercy Drive/Packing District Opportunity Zone.

Call today for more information!

MAURY L. CARTER & ASSOCIATES, INC.

Licensed Real Estate Brokers | www.maurycarter.com | 407-422-3144



**FOR
SALE**

ORANGE COUNTY COMMERCIAL LAND

1010 Fairvilla Rd, Orlando, FL 32808



PARCEL MAP

MAURY L. CARTER & ASSOCIATES, INC.

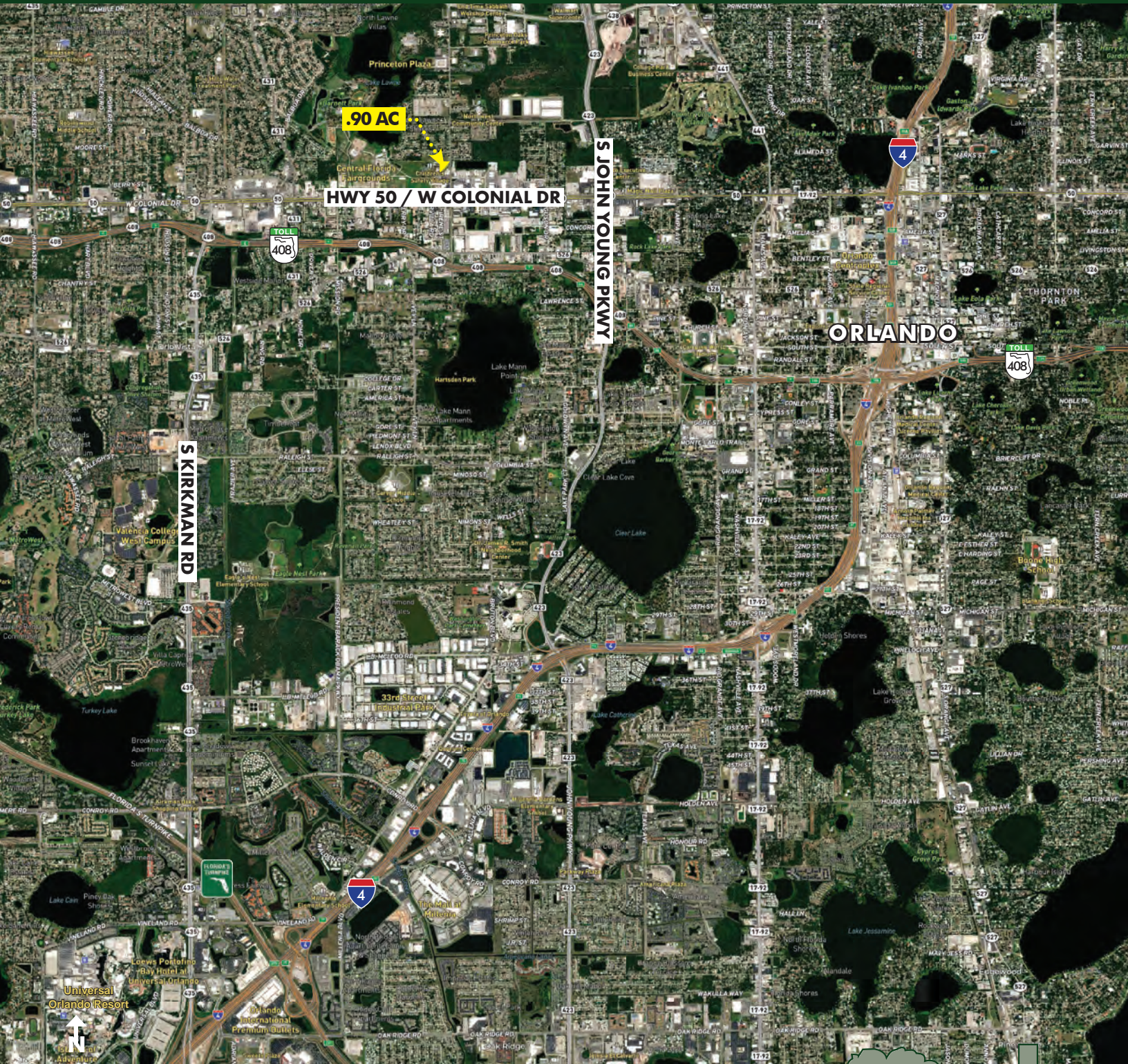
Licensed Real Estate Brokers | www.maurycarter.com | 407-422-3144



**FOR
SALE**

ORANGE COUNTY COMMERCIAL LAND

1010 Fairvilla Rd, Orlando, FL 32808



REGIONAL MAP

MAURY L. CARTER & ASSOCIATES, INC.

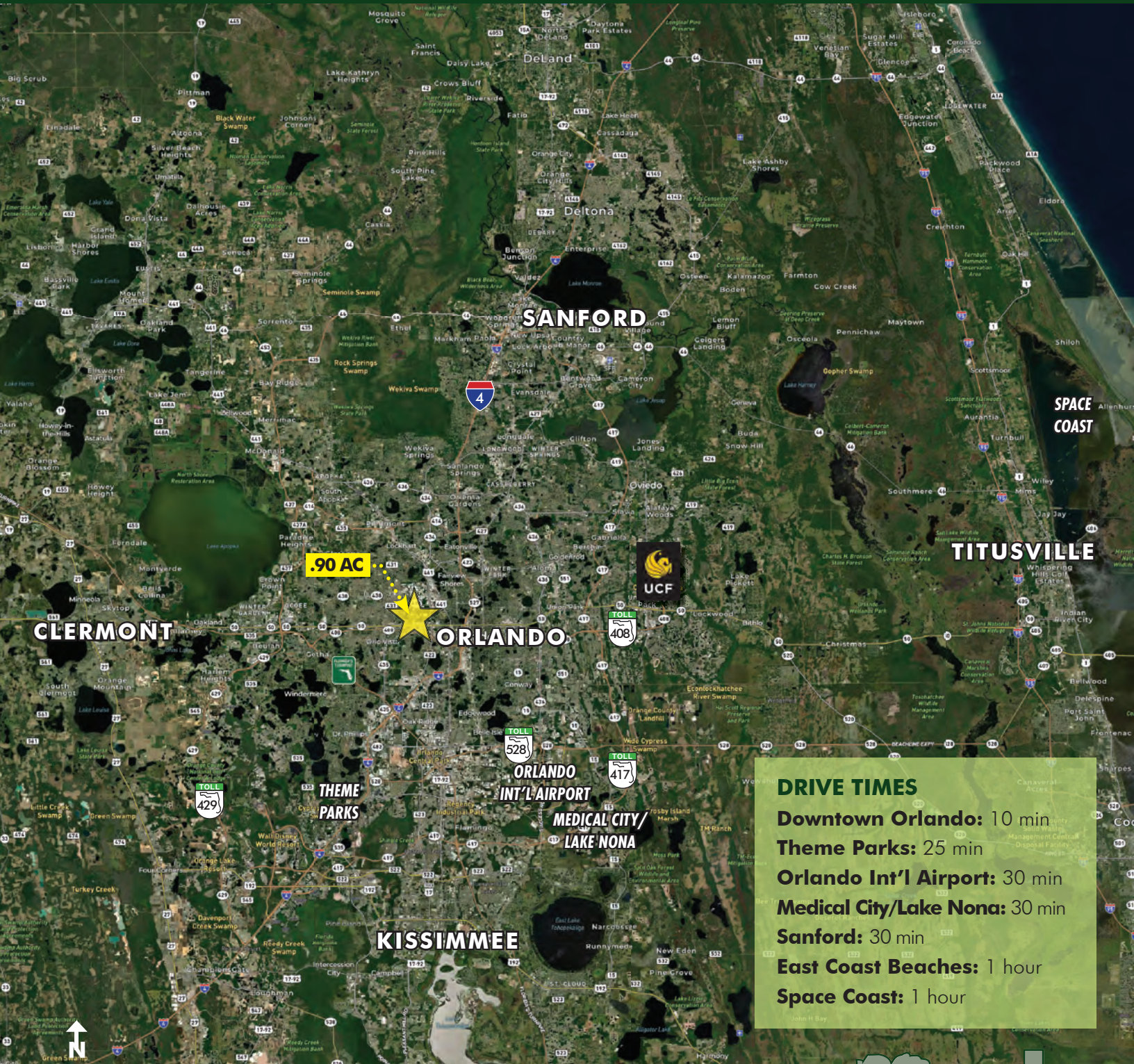
Licensed Real Estate Brokers | www.maurycarter.com | 407-422-3144



**FOR
SALE**

ORANGE COUNTY COMMERCIAL LAND

1010 Fairvilla Rd, Orlando, FL 32808



LOCATION MAP

MAURY L. CARTER & ASSOCIATES, INC.

Licensed Real Estate Brokers | www.maurycarter.com | 407-422-3144



**FOR
SALE**

ORANGE COUNTY COMMERCIAL LAND

1010 Fairvilla Rd, Orlando, FL 32808



MAURY L. CARTER & ASSOCIATES, INC.

Licensed Real Estate Brokers | www.maurycarter.com | 407-422-3144

