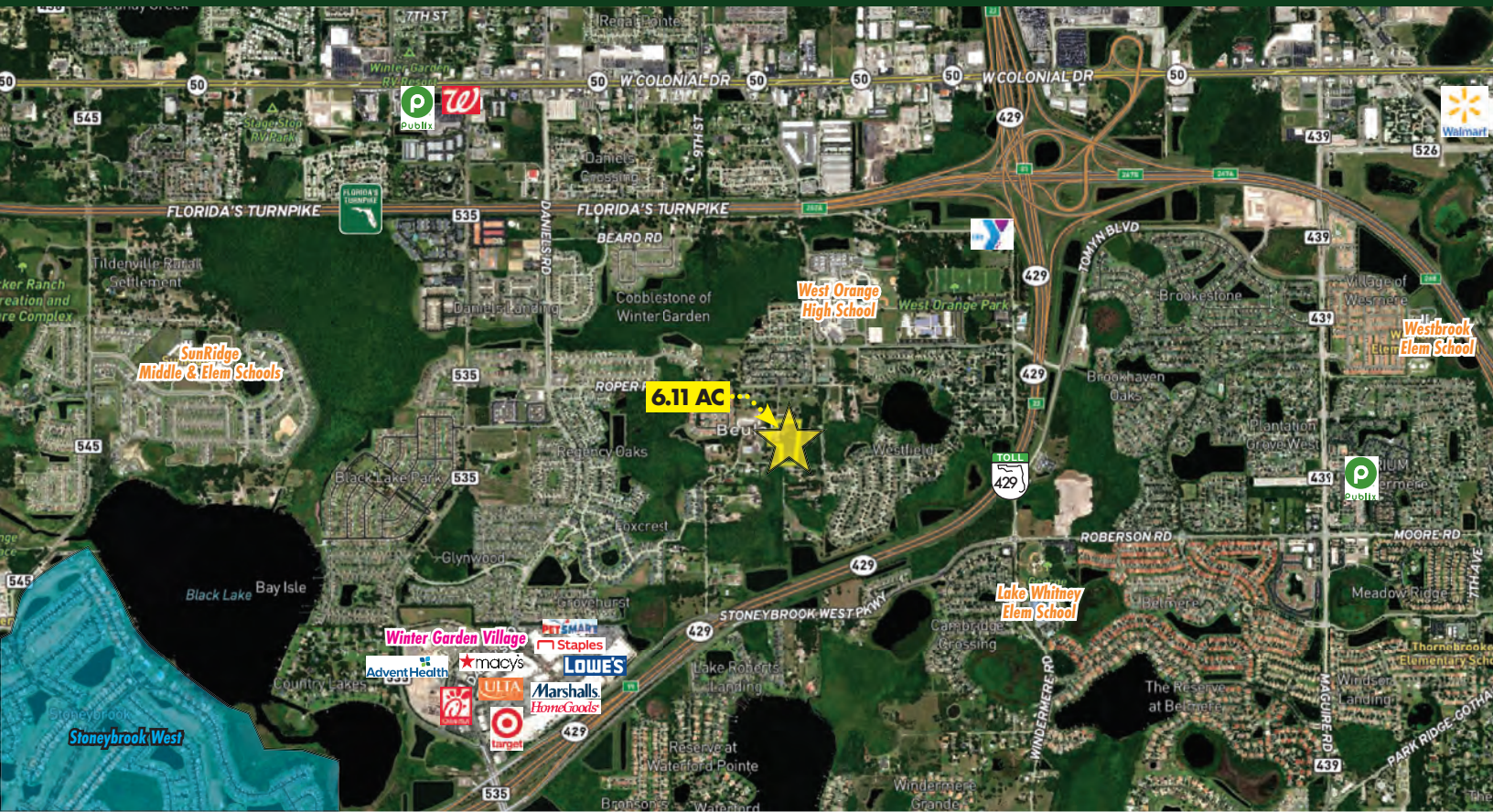


**FOR  
SALE**

# 6-ACRE RESIDENTIAL OPPORTUNITY NEAR WEST ORANGE HIGH SCHOOL

621 Beulah Rd, Winter Garden, FL 34787

**PRICE REDUCED**



## ABOUT THE PROPERTY

**SIZE** 6.11± acres

**PRICE** Now \$750,000

**ZONING** A-1

**FLU** R (Rural)

**UTILITIES** Electric - available; Well - available;  
Septic System - required

**ROAD  
FRONTAGE** 244' on Beulah Rd

**PARCEL ID** 36-22-27-0000-00-004

## DESCRIPTION

### Minutes away from everything you need!

Located in Winter Garden, this property offers convenient access to a variety of local amenities, including shopping centers, restaurants, medical care, and parks. It is also less than 1/3 mile from West Orange High School. The central location provides easy access to major highways, making commuting a breeze. With over 6 acres and no HOA, you can build your dream home, customizing the property to your liking.

**Don't miss this opportunity - call to schedule a showing TODAY!**

**MAURY L. CARTER & ASSOCIATES, INC.**

Licensed Real Estate Brokers | [www.maurycarter.com](http://www.maurycarter.com) | 407-422-3144

Offering subject to errors, omission, prior sale or withdrawal without notice.





**FOR  
SALE**

# 6-ACRE RESIDENTIAL OPPORTUNITY NEAR WEST ORANGE HIGH SCHOOL

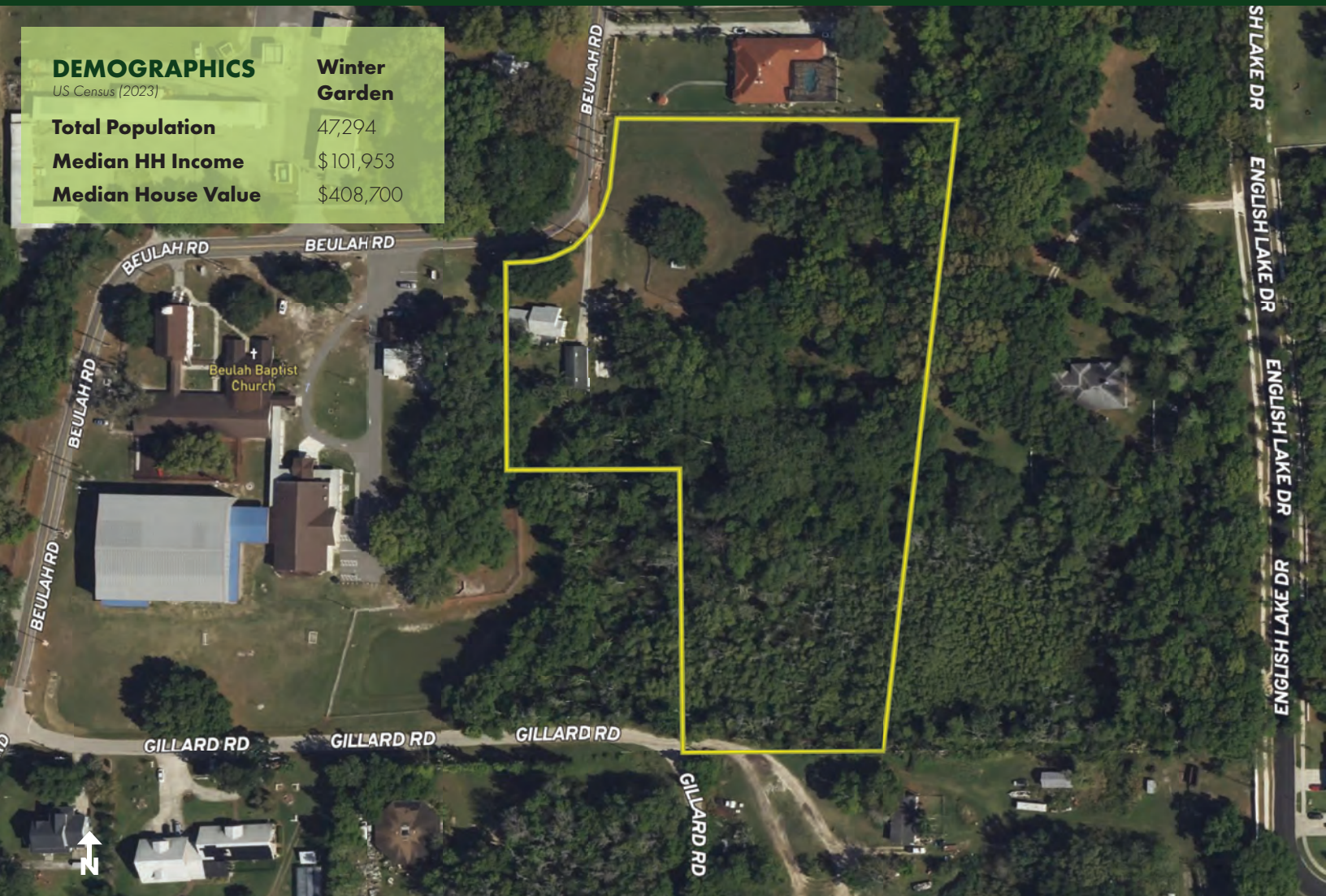
621 Beulah Rd, Winter Garden, FL 34787

## DEMOGRAPHICS

US Census (2023)

<b>Total Population</b>	47,294
<b>Median HH Income</b>	\$101,953
<b>Median House Value</b>	\$408,700

## Winter Garden



**PARCEL MAP**

**MAURY L. CARTER & ASSOCIATES, INC.**

Licensed Real Estate Brokers | [www.maurycarter.com](http://www.maurycarter.com) | 407-422-3144

Offering subject to errors, omission, prior sale or withdrawal without notice.

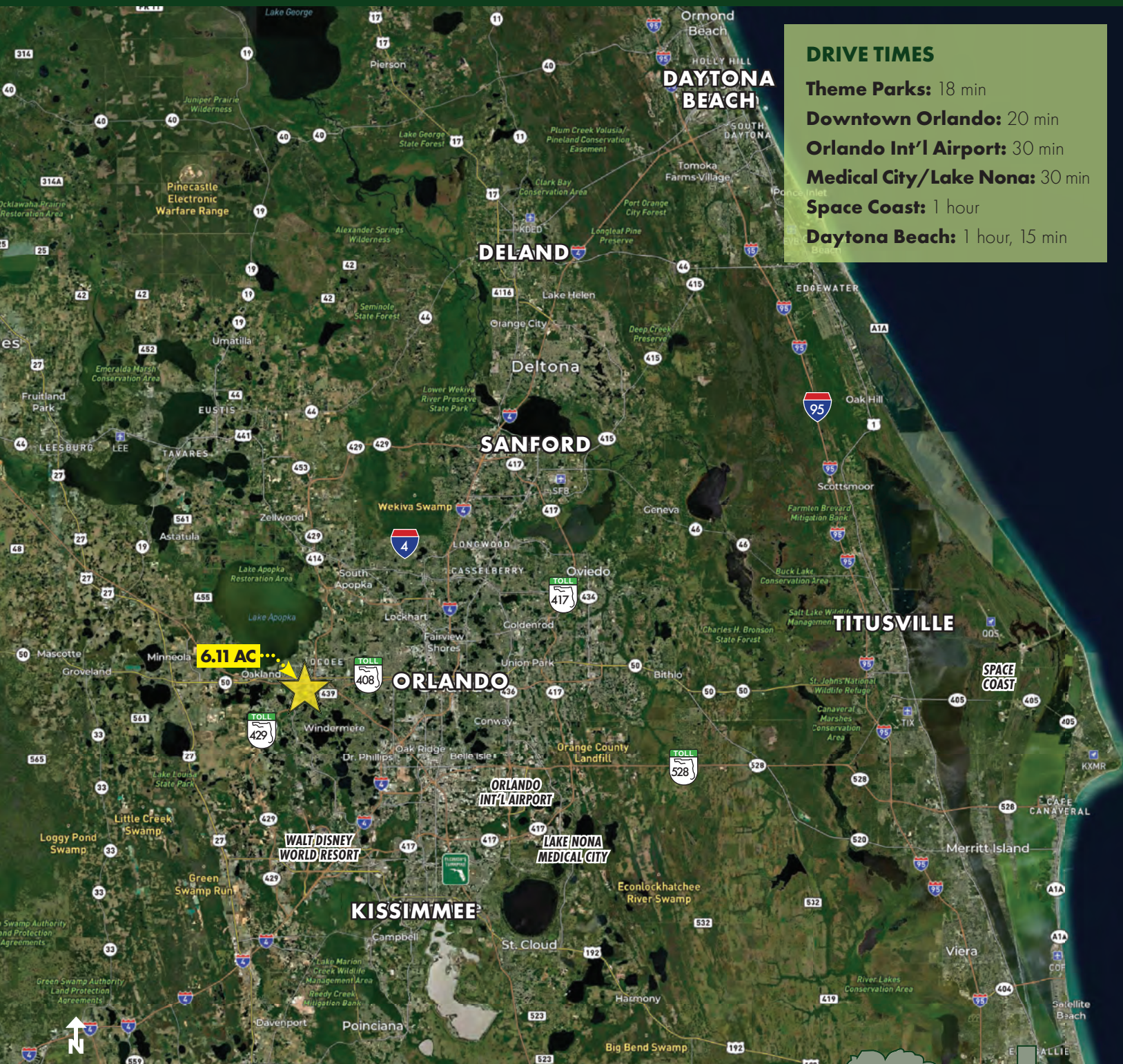




**FOR  
SALE**

# 6-ACRE RESIDENTIAL OPPORTUNITY NEAR WEST ORANGE HIGH SCHOOL

621 Beulah Rd, Winter Garden, FL 34787



## DRIVE TIMES

**Theme Parks:** 18 min

**Downtown Orlando:** 20 min

**Orlando Int'l Airport:** 30 min

**Medical City/Lake Nona:** 30 min

**Space Coast:** 1 hour

**Daytona Beach:** 1 hour, 15 min

## LOCATION MAP

**MAURY L. CARTER & ASSOCIATES, INC.**

Licensed Real Estate Brokers | [www.maurycarter.com](http://www.maurycarter.com) | 407-422-3144

Offering subject to errors, omission, prior sale or withdrawal without notice.

