

**FOR  
SALE**

# 1.65 ACRE RETAIL DEVELOPMENT SITE

576 E International Speedway Blvd, DeLand, FL 32724



## AVERAGE DAILY TRAFFIC COUNTS (2022)

- 1 26,500 E Int'l Speedway Blvd
- 2 33,500 N Woodland Blvd

## ABOUT THE PROPERTY

<b>SIZE</b>	1.65± acres (adjacent 5 acres could be assembled to total 6.65 acres)
<b>PRICE</b>	\$900,000
<b>ZONING</b>	C-2 General Commercial
<b>FLU</b>	Highway Commercial
<b>UTILITIES</b>	Water and sewer available
<b>ROAD FRONTAGE</b>	250'± on Int'l Speedway Blvd
<b>PARCEL IDS</b>	700400000180, 700400000200, 700400000190

## DESCRIPTION

**Last available retail location on International Speedway Blvd - Prime for Development!**

1.65-acre commercial site located along International Speedway Boulevard. Current access is right in, right out. Traffic counts along International Speedway are 26,500 in front of the subject property. This property is directly across the street from the DeLand Municipal Airport. Other retailers in the area include Lowe's, Publix, Aldi, Walmart, and more!

**Call for more information today, this opportunity will not last long!**

**MAURY L. CARTER & ASSOCIATES, INC.**

Licensed Real Estate Brokers | [www.maurycarter.com](http://www.maurycarter.com) | 407-422-3144

Offering subject to errors, omission, prior sale or withdrawal without notice.

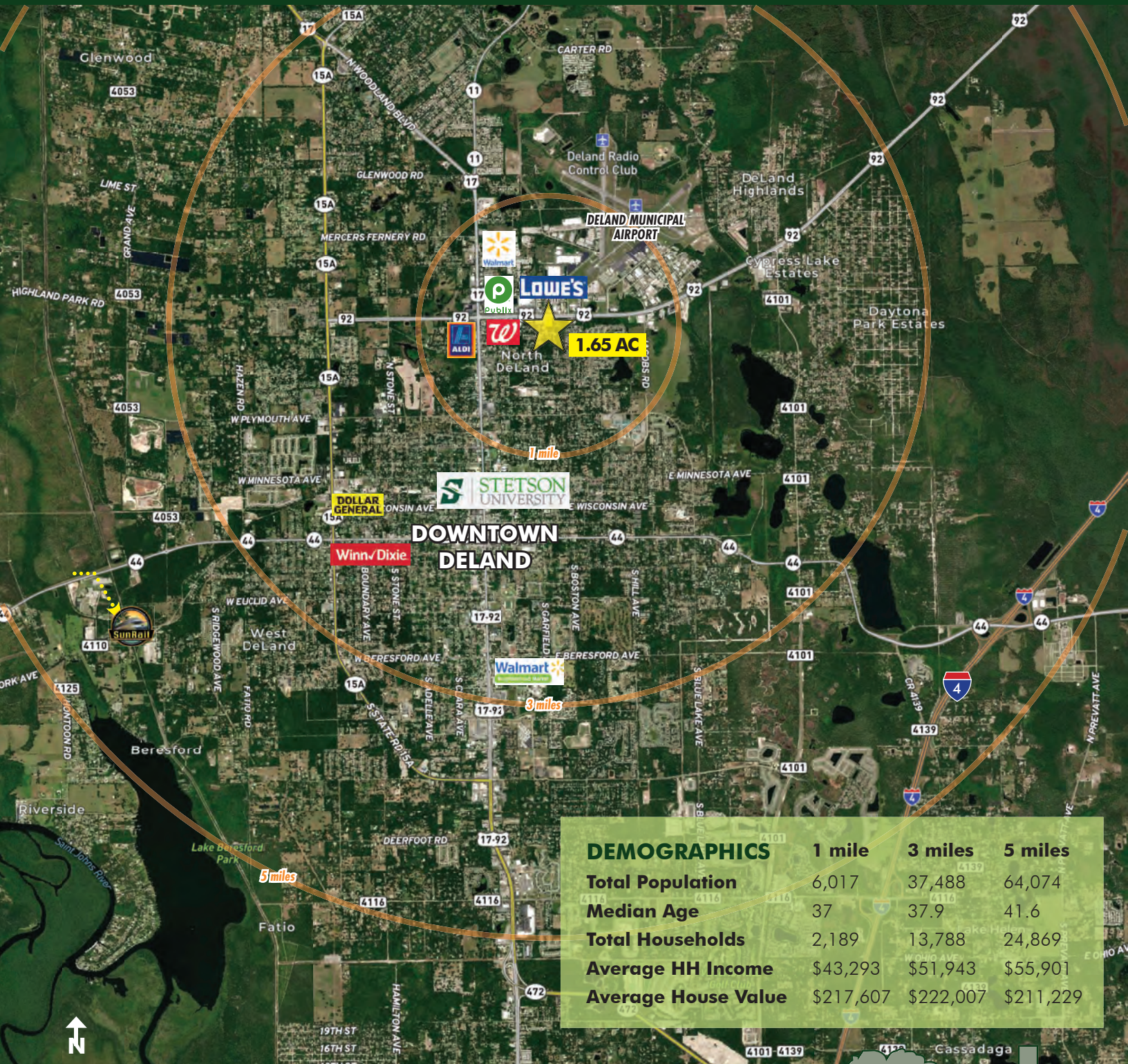




**FOR  
SALE**

# 1.65 ACRE RETAIL DEVELOPMENT SITE

576 E International Speedway Blvd, DeLand, FL 32724



**REGIONAL MAP**

**MAURY L. CARTER & ASSOCIATES, INC.**

Licensed Real Estate Brokers | [www.maurycarter.com](http://www.maurycarter.com) | 407-422-3144

Offering subject to errors, omission, prior sale or withdrawal without notice.





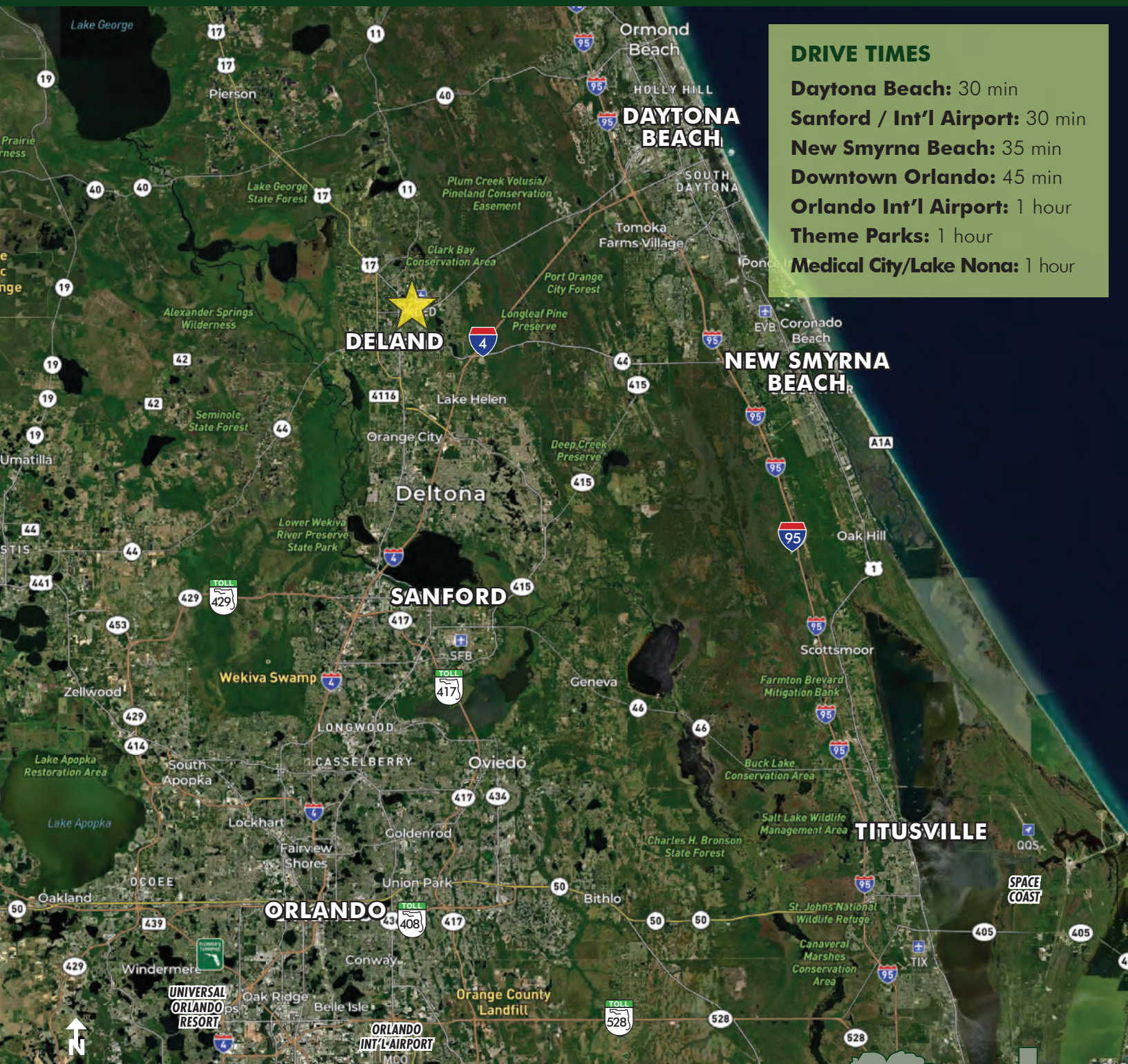
**FOR  
SALE**

# 1.65 ACRE RETAIL DEVELOPMENT SITE

576 E International Speedway Blvd, DeLand, FL 32724

## DRIVE TIMES

**Daytona Beach:** 30 min  
**Sanford / Int'l Airport:** 30 min  
**New Smyrna Beach:** 35 min  
**Downtown Orlando:** 45 min  
**Orlando Int'l Airport:** 1 hour  
**Theme Parks:** 1 hour  
**Medical City/Lake Nona:** 1 hour



**LOCATION MAP**

**MAURY L. CARTER & ASSOCIATES, INC.**

Licensed Real Estate Brokers | [www.maurycarter.com](http://www.maurycarter.com) | 407-422-3144

Offering subject to errors, omission, prior sale or withdrawal without notice.

