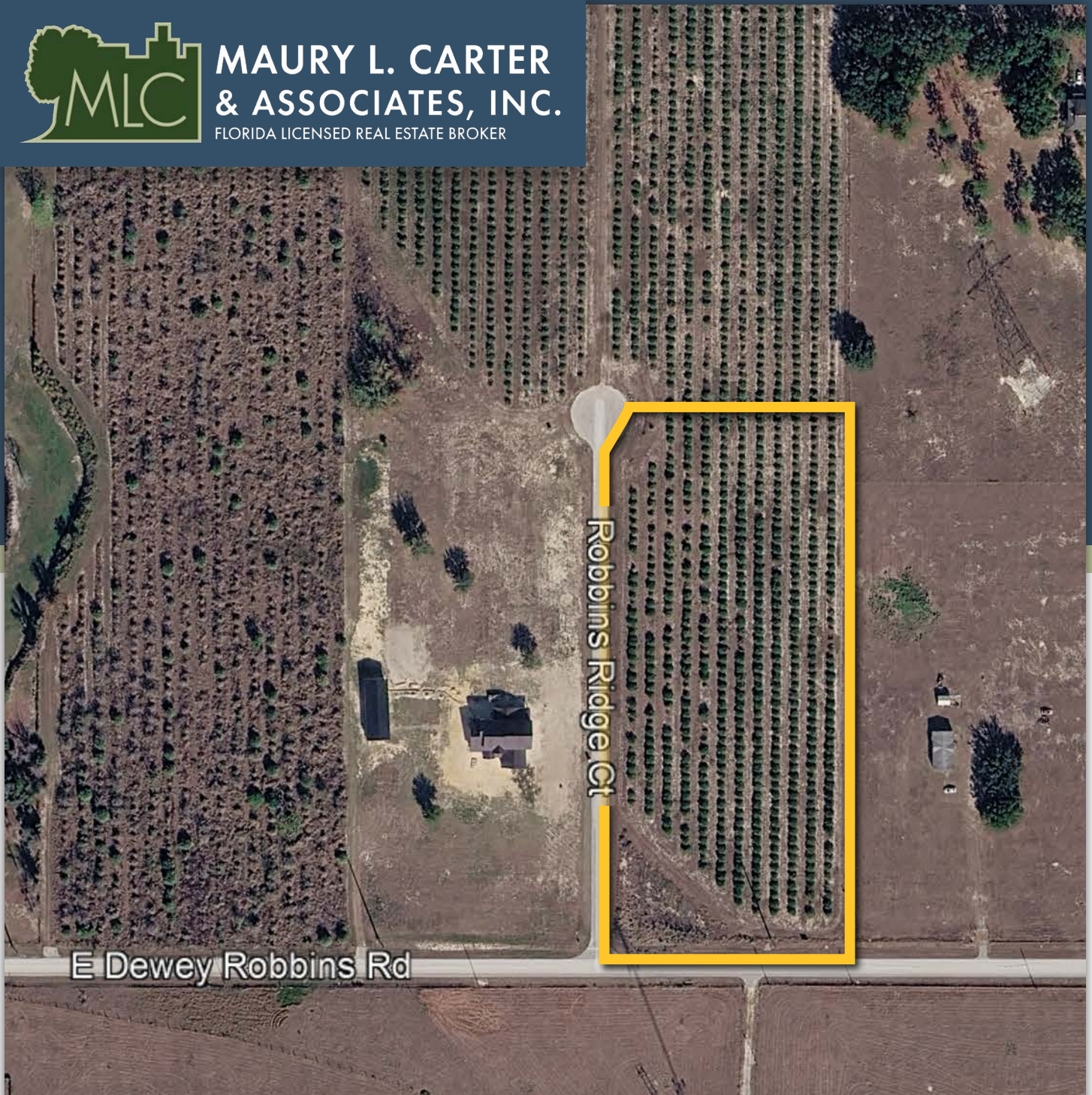




**MAURY L. CARTER
& ASSOCIATES, INC.**
FLORIDA LICENSED REAL ESTATE BROKER



PRICE: \$350,000

4.7 AC RESIDENTIAL LOT WITH CITRUS GROVE IN LAKE COUNTY

23000 Robbins Ridge Ct, Howey-In-The-Hills, FL 34737

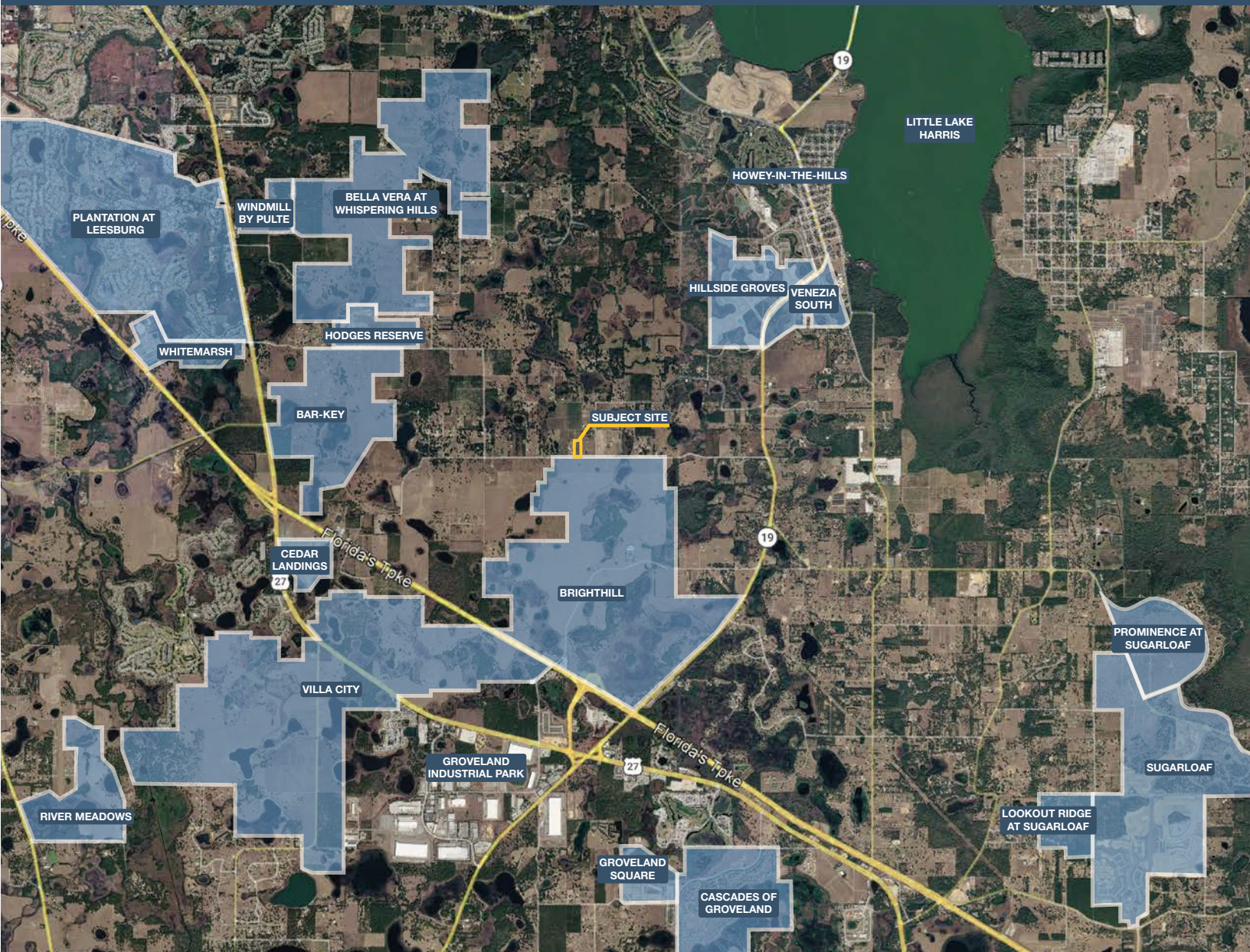
PROPERTY DETAILS

- Size: ±4.7 acres
- Zoning: Agriculture
- Price: \$350,000
- Parcels: 04-21-25-0010-000-00100
- FLU: Rural
- Utilities: Electric

PROPERTY HIGHLIGHTS

Positioned in the heart of one of Lake County's fastest growing areas, this 4.7± acre property offers an exceptional opportunity for your future homesite.

Surrounded by many planned residential communities, the site benefits from convenient access to US Highway 27 and is centrally located in Howey-in-the-Hills between Clermont, Mascotte, Montverde, and Leesburg. Nestled among citrus groves and rolling hills, the property presents a unique opportunity to build a retreat that blends natural beauty with convenient access to one of Central Florida's fastest growing residential corridors.



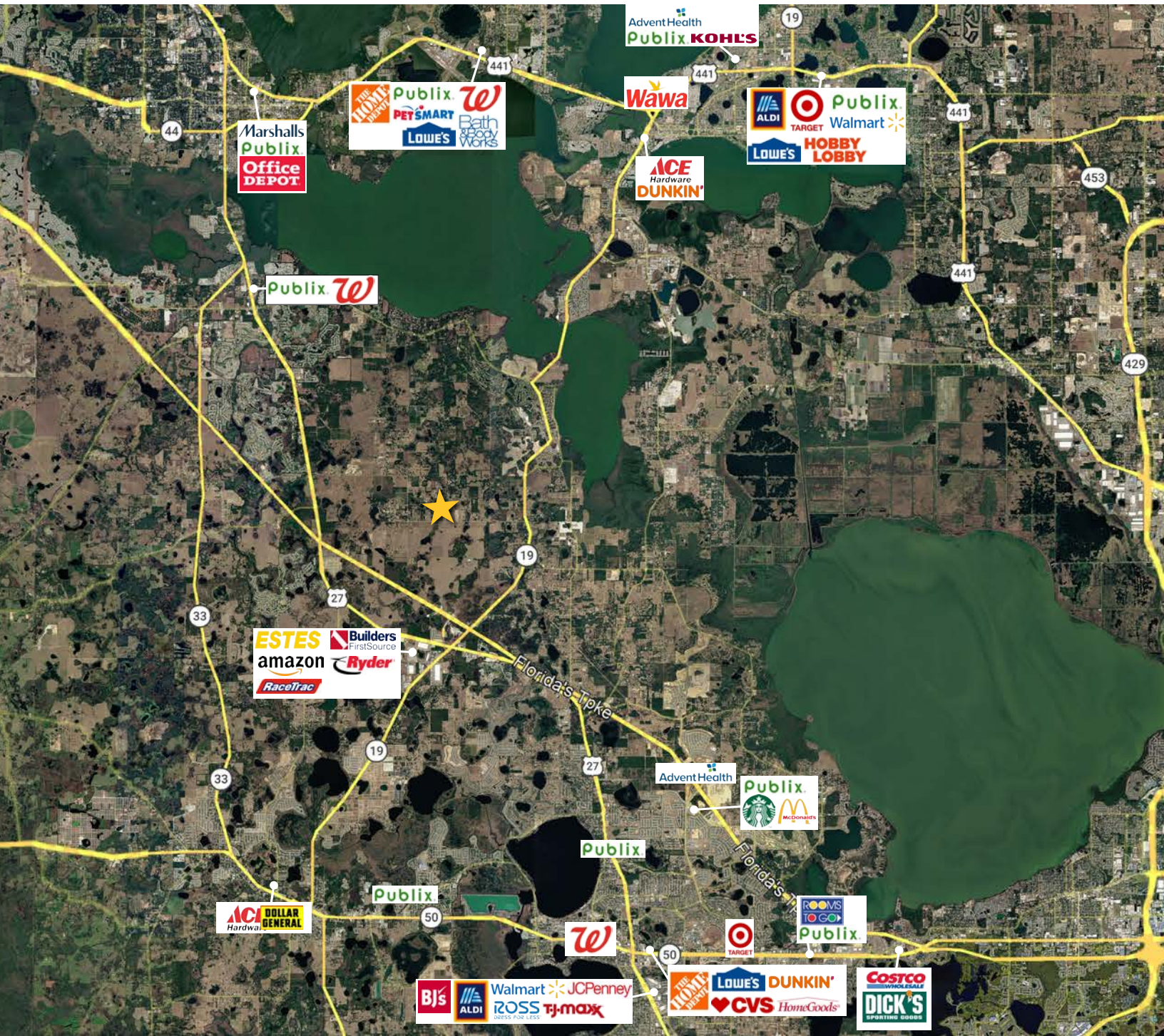
GEOGRAPHICAL DETAILS

DEMOGRAPHICS

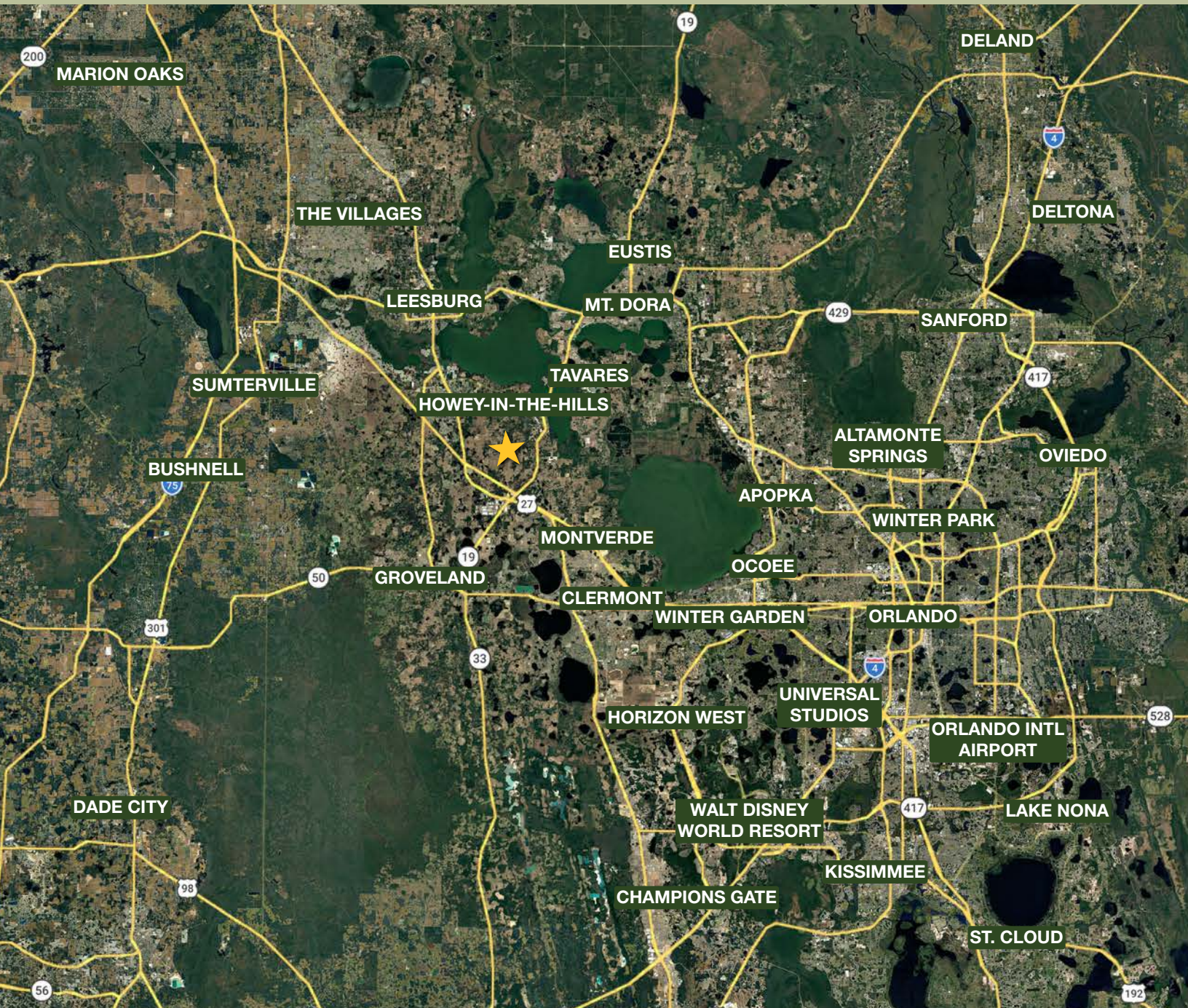
Total Population	2,771	444,204
Median HH Income	\$100,694	\$76,617
Median Home Value	\$414,000	\$360,100

Howey-in-the-Hills, US Census

Lake County, US Census



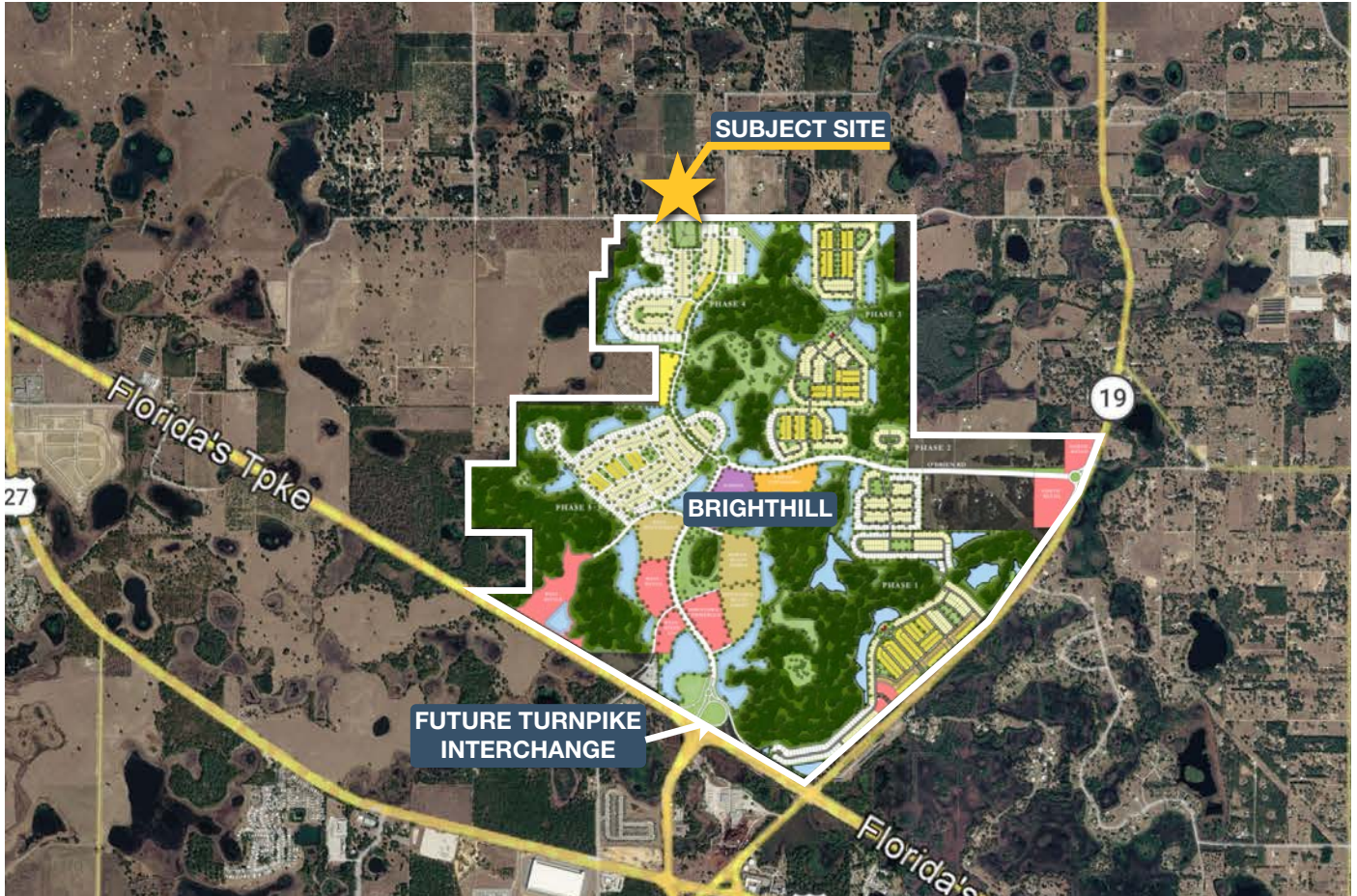
REGIONAL MAP



DRIVE TIMES

- Groveland: 15 min
- Clermont: 20 min
- Tavares: 20 min
- Winter Garden: 30 min
- The Villages: 35 min
- Disney World: 40 min
- Horizon West: 40 min
- Orlando: 40 min
- Orlando International Airport: 45 min
- Sanford: 1 hr

LOCAL NEWS



Groveland will lobby FL Turnpike for full interchange at U.S. 27

By: James Wilkins | April 7, 2026 | GrowthSpotter

Groveland's City Council is teaming up with a developer to lobby Florida's Turnpike Enterprise for a full interchange at U.S. 27 that will clear the way for a commercial town center within the 2,100-acre Brighthill master-planned community.

Tampa-based developer Eisenhower Property Group, or EPG, has petitioned the Turnpike to reconfigure the trumpet-style interchange by realigning O'Brien Road to improve connectivity to State Road 19 and East Dewey Robbins Road and building roundabouts at both access points to eliminate the need for a traffic signal.

Brighthill is a mixed-use community approved for 2,961 units across five development phases... EPG purchased more than 1,300 acres located northwest of the interchange of State Road 19 and Florida's Turnpike in 2024 for \$44.3 million. Later in the year, Stanley Martin Homes sold its Peachtree Hills mixed-use subdivision on Dewey Robbins Road to EPG for \$18 million, with the developer eventually absorbing the mixed-use subdivision into its Brighthill master-planned community.

Read More: <https://www.growthspotter.com/2026/04/07/groveland-will-lobby-fl-turnpike-for-full-interchange-at-u-s-27/>